

MEMORANDUM

TO: Board of Trustees

FROM: Bobby Magee
District General Manager

SUBJECT: Review, Discuss and Accept a Donation in the Amount of \$3,470.30 from a Community Member for the Purchase of Pickleball Supplies.

DATE: May 8, 2024

I. RECOMMENDATIONS

It is recommended that the Board:

1. Accept a donation of \$3,470.30 from Sara Shorin for the purchase of pickleball supplies (attached as Exhibit A); and,
2. Direct staff to order and install the supplies as identified by the donor's wishes.

II. BACKGROUND

The Pickleball Advisory Committee makes suggestions to IVGID to improve pickleball related to play and matters of safety. The goal of the advisory committee is to make Incline Village the place known for the best pickleball in the area.

The advisory committee has identified two items that it believes will significantly enhance the play on the courts:

- 1) Installation of windsocks to help players detect wind direction related to the flight of the pickleball.
- 2) Installation of court barriers to keep the balls from rolling between courts for safety and fewer game interruptions.

Specifics of the proposals including a breakdown of the costs in included as Exhibit A.

III. FINANCIAL IMPACT AND BUDGET

If approved and accepted, the money from the donation will allow staff to order the supplies and equipment and install them on the courts.

IV. ALTERNATIVES

1. Decline the donation and spend District money for the purchase and installation of supplies and equipment.
2. Decline the donation and do not purchase and install the supplies and equipment.

V. ATTACHMENTS

- A. Proposal and pricing

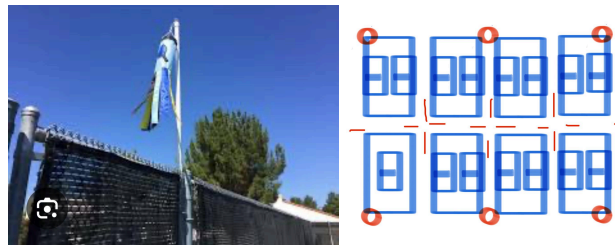
Windssocks and Court Barriers
 Donation from Sara Shorin
 \$3,470.30

Background Summary for Donation: The pickleball advisory committee makes suggestions to IVGID to improve pickleball play and safety for all players. The goal is to make Incline the place known for the best pickleball in the area.

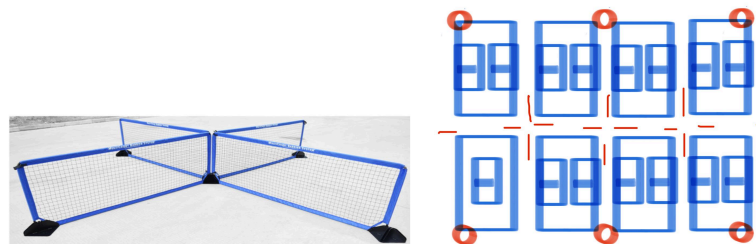
Two items that will significantly enhance the play on our courts are:

1. Windssocks - are used to help players detect wind direction, which is hugely beneficial since the wind dramatically affects the flight of the pickleball. The same is true for tennis, but the wind is even more of a factor in pickleball given the ball is a wiffle ball. Wind direction is the opposite of the direction in which the windssock is pointing, so a windssock pointing due north indicates a southerly wind. Wind speed is indicated by the windssock's angle relative to the mounting pole; in low winds, the windssock droops; in high winds it flies horizontally.

Here's a windssock on a tennis/pickleball fence indicating no wind, and a diagram with red circles to indicate the installation location of the windssocks.



2. Court barriers - are freestanding nets with weighted feet to keep the balls from rolling between courts to promote safety and fewer interruptions. Our court configuration is so tight that we can only add barriers where the benches are. The barriers will be set up near the court benches to prevent balls from traveling side to side and through the back end of the side of the courts near the benches. Here's a rough configuration of the court barriers. See red dashes.



- Note: We chose the mesh net barriers with weighted feet because we had shorter ones with a solid tarp and they blew over too easily.


Itemized Quotes for Proposed Items for Donation:

1) 6 White Heavy Duty Windsocks with 10" frame

<https://tom-windsocks.com/products/custom-printed-construction-windsock?variant=>

a) 6 white, heavy-duty 10"x36" windsocks with 10" frame

Invoice #D489




INVOICE #D489
Complete your purchase

[Complete your purchase](#)

or [Visit our store](#)

Order summary

	Custom Logo Aviation Heavy-Duty Windsock x 6 10" x 36"	\$593.70
<hr/>		
	Heavy Duty 10" frame x 6	\$599.70
<hr/>		
Subtotal		\$1,193.40
Order discount		-\$180.00
● Volume discount (69.95 each) (-\$180.00)		
Shipping		\$60.00
Estimated taxes		\$0.00
<hr/>		
Total		\$1,073.40 USD
Total paid today		\$0.00 USD
		You saved \$180.00

Customer information

Shipping address
Sara Shorin
AL
United States

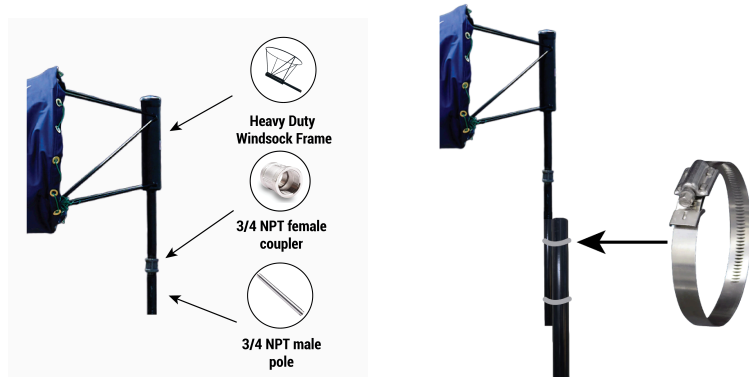
b)

c) Install supplies: \$612.90

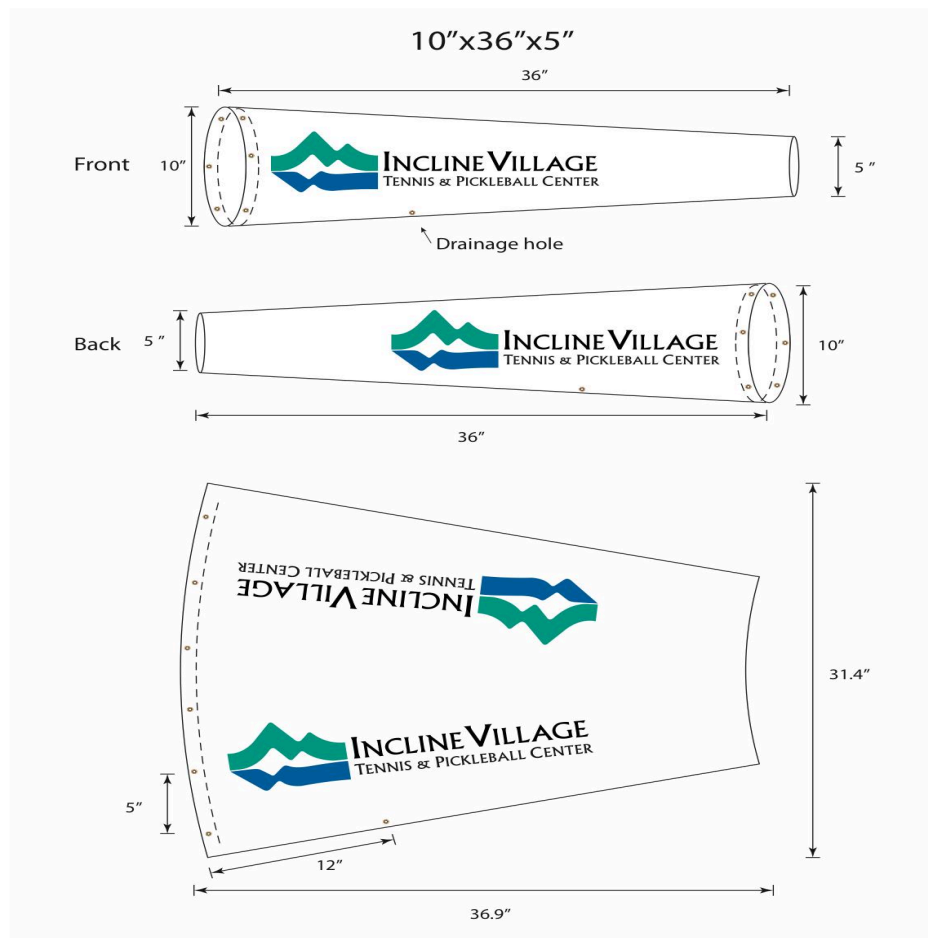
i) <https://a.co/d/9pa9SqA> 6 support poles

ii) <https://a.co/d/51N0QmL> 6 couplers

iii) <https://a.co/d/3MERvBm> 24 straps (6 4-packs)



d) LColor logo on white windsock x 6 = \$1,073.90



e) IVGID PB Logo file Format requirement

- i) Vector .pdf, .ai, .epi
- ii) Jackie sent logo to Jay at Custom Windsock Co,
info@custom-windsocks.com (please include invoice #D489. cc me, and

tell him you are from IVGID working with me (Sara Shorin) OR send logo to me and I can send it since he's been communicating with me)

2) 14 Court Barriers with 28 weighted feet: \$1,784

- <https://oncourtoffcourt.com/multicourt-barrier-system/>



Dallas, Tx 75214

Phone # 2148233078
Fax # 214-823-3082

Quote

Date	Quote #
3/28/2024	10644

Name / Address
Russ Borrelli Rec Center Incline Village, NV 89450

Ship To
Russ Borrelli Rec Center Incline Village, NV 8 9450

Customer Fax

Good Thru	Rep
4/28/2024	NB

Item	Description	Qty	Cost	Warehouse	Total
CEMCB	MultiCourt – Barrier NOTE: On barrier orders, it is essential that you review and approve the measurements listed on your quote to make absolutely certain they match the actual measurements you submitted. This is the customer's responsibility.	14	49.95	JP Logistics	699.30
CEMCSB	MultiCourt – Straight Base NOTE: On barrier orders, it is essential that you review and approve the measurements listed on your quote to make absolutely certain they match the actual measurements you submitted. This is the customer's responsibility.	28	29.95	JP Logistics	838.60
	Subtotal				1,537.90
Freight >1000	Freight		246.10		246.10

P.O. No.	
----------	--

Subtotal	\$1,784.00
Sales Tax (0.0%)	\$0.00
Total	\$1,784.00

3. **TOTAL DONATION: \$3,470.30**

- \$1073.40
- \$612.90
- \$1784