

LOCK THE BIN. NO GAP ALLOWED! LOCK THE ENCLOSURE. EVERY TIME!

Identify the closure style, see below for instructions. **All dumpsters must be kept locked, at all times, except for loading. Do not leave trash outside dumpster. Fines issued for non-compliance.**

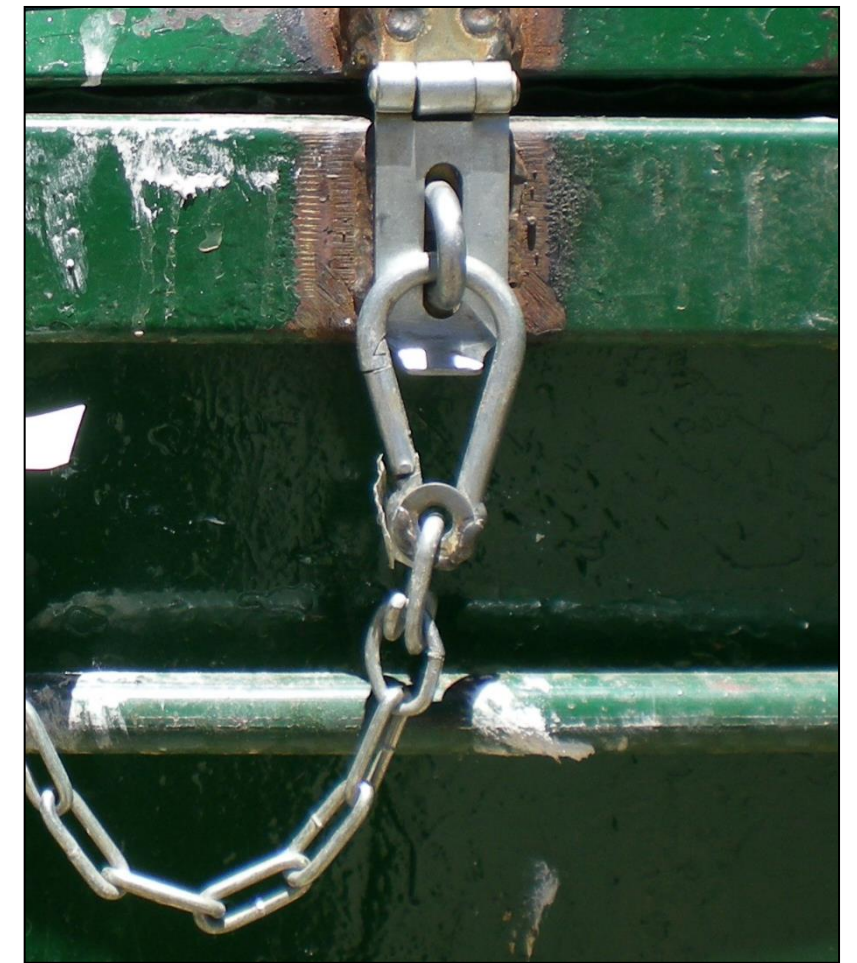
IVGID Trash Hotline: 775-832-1221.



- **CLOSE LID, then PULL CHAIN UP through SLOT.**
- **TIGHTEN the CHAIN, make it SNUG.**
- **SECURE with clasp or padlock.**



- **CLOSE LID then DROP SMALL CHAIN into SLOT.**
- **CLIP carbiner (or padlock) through slot holes and small chain.**



- **CLOSE LID.**
- **Secure HASP over RING.**
- **SECURE with clasp or padlock.**