

IVGID

Magazine
SPRING 2026



INCLINE VILLAGE
GENERAL IMPROVEMENT DISTRICT
ONE DISTRICT - ONE TEAM

Consistently Exceptional Specialty Care, Now in Incline Village

Barton Cardiology

Delivering expert heart and vascular care:

- Prevention
- Diagnosis
- Intervention or referral
- Rehabilitation

South Lake Tahoe, CA | Stateline, NV | Incline Village, NV

Barton Plastic Surgery

Offering solutions to improve:

- Bodily function
- Soften signs of aging
- Appearance and self esteem

South Lake Tahoe, CA | Incline Village, NV



Cardiology

530.543.5497

Plastic Surgery

530.543.5799

925 Tahoe Blvd., Ste. 105, Incline Village, NV



Barton
Health

bartonhealth.org

BOARD OF TRUSTEES

Chair

Michaela Tonking
tonking_trustee@ivgid.org

Vice Chair

Michelle Jezycki
jezycki_trustee@ivgid.org

Treasurer

Mick Homan
homan_trustee@ivgid.org

Secretary

Dave Noble
noble_trustee@ivgid.org

Trustee

Ray Tulloch
tulloch_trustee@ivgid.org

EDITORIAL STAFF

MANAGING EDITOR

Kari Ferguson

CONTRIBUTORS

Paul Raymore
Jaclyn Ream
Robert Harrison
Rob Bruce
Jeff Clothier
Greg Merrit
Adia Van Peborgh
Gwynne Cunningham
Kimberly Monte
Jill Whisler
Meagan Ballew
Elko James
Cedar Gately
Clayton Green

CONTACT US

893 Southwood Blvd.
Incline Village, NV 89451
775.832.1100
info@ivgid.org

PUBLISHING

Each Incline Village/Crystal Bay parcel owner receives one subscription to a domestic address.

ADVERTISING SALES

CCMedia Publishing
775.548.6562 | www.cc.media
Sales: peggy@ccmpublishing.coM
Design: Tina Cutler

COVER PHOTO

Cover by Michael Harrigan

WHAT'S INSIDE

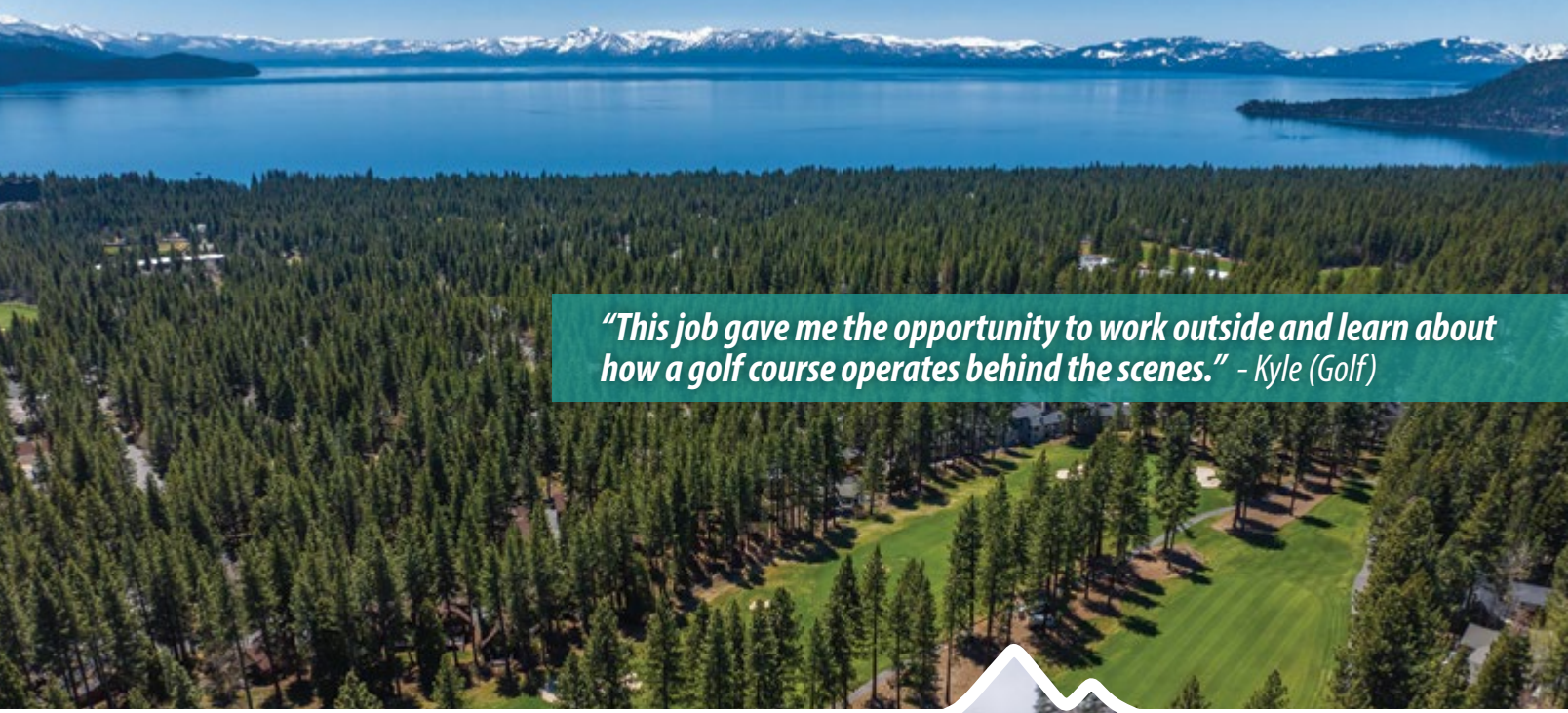
- 05 Message from Robert Harrison, IVGID GM
- 06 What to Expect at Incline Beach this Summer
- 08 Music on the Beach 2026 Schedule
- 12 Youth Summer Camps
- 16 Aquatics
- 20 Health & Wellness Programs
- 24 Adult Sports Leagues
- 26 Beaches & Parks
- 33 Recreation Center
- 34 Tennis & Pickleball Center
- 36 The Golf Courses at Incline Village®
- 40 Diamond Peak Ski Resort
- 44 Capital Improvement Projects & Waste Not
- 46 Weddings & Events
- 48 IVGID Board of Trustees
- 50 Incline Village Jobs
- 52 Incline Village Facilities
- 53 Incline Village/Crystal Bay Neighborhood Map
- 54 Heart of Incline Village Map

No longer want to receive this magazine in the mail? Please scan this QR to let us know.



IVGID FACILITIES & CONTACT INFO

Aspen Grove Community Center	960 Lakeshore Blvd.	775.832.1240
Burnt Cedar Beach	665 Lakeshore Blvd.	775.832.1232
Championship Golf Course	955 Fairway Blvd.	775.832.1146
Diamond Peak Ski Resort	1210 Ski Way	775.832.1177
Disc Golf Course	980 Incline Way	775.832.1310
Incline Beach	967 Lakeshore Blvd.	775.832.1233
Incline Bike Park	980 Incline Way	775.832.1310
Ridgeline Park Fields	939 Southwood Blvd.	775.832.1310
Incline Skate Park	Tahoe Blvd. & Southwood	775.832.1310
Administration/HR	893 Southwood Blvd.	775.832.1100
Mountain Golf Course	690 Wilson Way	775.832.1150
Preston Field	700 Tahoe Blvd.	775.832.1310
Public Works	1220 Sweetwater Rd.	775.832.1203
Recreation Center	980 Incline Way	775.832.1310
Ski Beach	967 Lakeshore Blvd.	775.832.1156
Tennis & Pickleball Center	964 Incline Way	775.832.1235
The Chateau at Incline Village	955 Fairway Blvd.	775.832.1240
The Grille at the Chateau	955 Fairway Blvd.	775.832.1178
Village Green	960 Lakeshore Blvd.	775.832.1310



"This job gave me the opportunity to work outside and learn about how a golf course operates behind the scenes." - Kyle (Golf)



"I like working outside and with my hands. I enjoy seeing the kids and community playing on and enjoying the fields and parks I take care of." - Sam (Parks Maintenance)

FULL-TIME, PART-TIME, SEASONAL AND ON CALL POSITIONS AVAILABLE

Create memories that will last a lifetime and make a positive contribution to our community by joining the IVGID team. View all open positions and apply online:

YourTahoePlace.com/Jobs





WELCOME MESSAGE FROM ROBERT HARRISON

try something new, spend time with family, or reconnect with neighbors, we've designed this season's offerings with all ages and interests in mind.

Our staff across the community services venue have worked hard to create engaging, accessible, and meaningful experiences that support wellness, learning, and community connection. We're especially proud to continue offering programs that bring people together, celebrate our unique surroundings, and encourage an active, healthy lifestyle.

We invite you to explore the listings, mark your calendar, and join us for a fantastic season ahead. Whether you're a longtime participant or trying a program for the first time, we're

glad you're here and look forward to welcoming you this spring.

This edition includes special updates on key projects, including the Incline Beach House, Bike Park, and Skate Park.

Thank you for being part of our community—we can't wait to see you out and about this season. See you around the Village.

Respectfully,

Robert Harrison

Robert Harrison,
IVGID General Manager

Spring has arrived in Incline Village and Crystal Bay, which means it's time to kick off IVGID's spring programming!

As the days grow longer and the energy of spring returns to our community, we're excited to welcome you to a new season of programs, events, and opportunities to connect.

Spring is a time of renewal, and our programming reflects that spirit. Whether you're looking to get active,



SCAN QR TO VIEW GALLERY
ASPENLEAFINTERIORS.COM
775.342.3477



ASPEN LEAF
INTERIORS
BY MARCIO DECKER



Renderings of the new Incline Beach House facilities and band stand which will open for summer 2027.

WHAT TO EXPECT AT INCLINE BEACH THIS SUMMER & NEXT By Paul Raymore

Incline Village residents who venture down to the restricted-access beaches this summer will notice some significant changes for the 2026 beach season – namely, an active construction zone in place of the Incline Beach snack bar, tiki bar and restrooms, and the closure of the normal vehicle entrance to Incline Beach.

Residents will start to see initial mobilization, demolition and tree removal beginning in mid-April, with new construction slated to commence on May 1, 2026.

The work is part of the Incline Beach House Project (CIP Project #3973L1302). The project replaces the 60-year-old snack bar with a modern food service facility that includes a commercial kitchen, food preparation and service areas, customer ordering and pick-up windows, a bar, patio seating and fire pits.

The project also includes an expansion of the Incline Beach restrooms, eliminating the need for temporary porta-potties during non-holiday periods and providing year-round restroom facilities at Incline Beach.

Finally, the project includes improvements to the vehicle turn-around and drop-off areas; however, the entrance and exit configuration at Incline Beach will remain generally consistent with the existing layout.

“We appreciate the community’s patience and understanding as we complete the final construction phase of the Incline Beach House Project,” said IVGID General Manager Robert Harrison. “It’s been a long road to get to this point, and we are all eager to see the new Incline Beach House rise up throughout the summer of 2026.”

What Will Be Open and What Will Be Closed this Summer

Incline Beach will remain open to IVGID Pass holders and their guests this summer, but access will look a little different.

The beach and shore zone at Incline Beach will remain open, including most of the picnic tables under the trees, the large grassy field adjacent to Third Creek, and the Incline Beach Playground.

Continued on page 8

Where Tahoe Sellers Meet Bay Area Buyers

LUXURY REPRESENTATION FOR INCLINE VILLAGE HOMEOWNERS

Record-setting representation. Discreetly delivered.

Selling a luxury home in Tahoe is about more than exposure. It's about access to the right buyers, thoughtful preparation, and strong negotiation.

Christine Perry is a trusted luxury real estate advisor in Incline Village, known for connecting Tahoe sellers with qualified Silicon Valley and Bay Area buyers. Her cross-market network brings real demand to properties that often trade quietly, supported by a marketing reach that extends well beyond the local market.

Christine **represented the record-breaking \$62 million sale** of 1041 Lakeshore Blvd., the Wynn Estate, in 2024. She is also known for successfully repositioning luxury homes that previously sat on the market, helping sellers move forward with clarity, discretion, and results.

Private consultations for Incline Village homeowners

CHRISTINE PERRY | REALTOR® | christine@sereno.com
408.858.5587 | Tahoeluxurylakefronts.com
CA DRE 01157473 & NV RED S.0192951

CHRISTIE'S
INTERNATIONAL REAL ESTATE
SERENO

PERRY
— TEAM —
T A H O E



The information contained herein has been obtained from third party sources deemed reliable but its accuracy is not guaranteed. Christie's International Real Estate Sereno has not and will not verify the information and assumes no responsibility for its accuracy. Buyer should verify and investigate all information to Buyer's satisfaction. If your home is currently listed with another agent, please disregard this marketing material.

MUSIC ON THE BEACH

Fridays in May

- 22 Full Blast Band
- 29 Bad Decisions

Fridays in June

- 05 Sierra Roc
- 12 Big Red Band
- 19 Nick Eng Band
- 26 Sonik Rewind

Wednesdays in June

- 17 Matt/Buddy
- 24 Peter DeMattei Duo

Fridays in July

- 3 Blues Monsters
- 10 Jacked Up
- 17 New Wave Crave
- 24 Reckless Envy
- 31 Jason King Band

Wednesdays in July

- 1 Jennifer Grant Duo
- 8 Erik Anderson
- 15 Wes & Liz
- 22 Nick Eng Duo
- 29 April & Sheldon

Fridays in August

- 07 AMA 5
- 14 Wes Orsolich Band
- 21 Glitter Bomb
- 28 Jennifer Grant

Wednesdays in August

- 05 Chuck & Steve
- 12 Jeff Jones
- 19 Virginia & Keith

Fridays in September

- 4 Public Eye
- 11 Reckless Envy



The normal vehicle and pedestrian entrance will be closed to accommodate the construction project, but a temporary Incline Beach entrance will be created to the west of the existing entrance (closer to Village Blvd.).

Parking at Incline Beach will be more limited during construction, as several parking spaces will be temporarily impacted by fencing installed around the project perimeter. Beach goers are encouraged to utilize the Aspen Grove and Overflow parking lots across Lakeshore Boulevard and to consider alternative transportation options – such as cycling, carpooling or ride-share services – when visiting the beach this summer, especially during peak weekends and holidays.

Food & Beverage Service On Ski Beach

Food and beverage services will move over to Ski Beach this summer, where our Food & Beverage Team is working on plans to offer a fun menu of beach-themed favorites and a great selection of cocktails, beers, wines and non-alcoholic drinks.

“We’re actively exploring ways to enhance food and beverage offerings at Ski Beach while the Incline Beach

House is under construction,” said Evan Carsman, IVGID food & beverage manager. “We’re especially excited about supporting community events like Music on the Beach and want to provide convenient, high-quality options that elevate the guest experience, while we continue working through equipment acquisition and permitting considerations to ensure we implement the right long-term solution.”

What About Music On the Beach?

Incline’s beloved Music on the Beach concert series will move to a new temporary location next door at Ski Beach for 2026. While IVGID has taken over management of the concert series, the District has contracted with Mitch Harbaugh – who has been running the Music on the Beach concerts for 15+ years – to book the bands and emcee the events for us, so concertgoers should expect the same good vibes and great tunes they’ve come to expect in years past.

“It has been an absolute pleasure and privilege over the last 15 years to watch the community come together every week throughout the summer for what has become an amazing music series at the beach,” Harbaugh said. “And now



with the help of IVGID, we will continue this highly anticipated event that makes living in Incline Village that much more stellar!”

What Will the Revamped Incline Beach House Look Like?

The new Incline Beach House has been thoughtfully designed to provide a functional and welcoming space while blending into the natural beauty of the setting and preserving the views of Lake Tahoe that make Incline Beach so special.

In working to refine the scope of the project, IVGID’s project management staff worked closely with CORE Construction (the project construction manager) and the IVGID Board of Trustees to come up with a design and site layout that maximizes the usable space in an efficient and engaging layout.

The new year-round restroom facilities will have expanded capacity and improved finishes throughout. The layout of the buildings was designed to add outdoor patio seating as well as two new fire pits to be located just west of the patio. The bar will move slightly closer to the lake, providing areas for guests to sit at the bar while keeping the queues for the bar and the food service window separate.

The new Incline Beach House food service venue will reflect a relaxed lakeside setting inspired by Tahoe’s natural materials and the casual atmosphere of a day at the beach.

“At the new Incline Beach House, our food and beverage program is designed to bring a fresh and vibrant energy to the shoreline, blending tropical inspiration with Tahoe’s natural beauty and laid-back spirit,” Carsman said.

Continued on page 10

DAISY TRAILS FOREST PRESCHOOL

WEEKEND & FRIDAY NIGHT PROGRAMS

For kids ages 0-10

**Weekend Camps
9 AM - 1 PM**

**Parents’ Night Out
Fridays 4 PM - 11 PM**

Forest-style enrichment & outdoor fun!



**CALL OR TEXT
775-624-8898**

“Guests can expect bright, citrus-forward flavors, rum-driven sunset cocktails and elevated beach fare that feels both playful and refined. By day, it’s a welcoming, family-friendly beach setting; by evening, it becomes a relaxed sunset lounge, creating a place for residents, visitors, and guests to gather and enjoy summer in Incline Village.”

And finally, the project includes upgraded band infrastructure for the Music on the Beach concert series, ensuring that this tradition will continue at Incline Beach for the 2027 beach season and beyond.

What’s the History of the Incline Beach House Project?

The Incline Beach House Project dates back to 2016 when the IVGID Board of Trustees first began prioritizing the need to replace the outdated restrooms and snack bar infrastructure at Incline Beach, much of which is 60+ years old. Various design concepts and revisions were considered throughout the years, but no consensus was reached that would move the project forward, until...

In January of 2022, the Board confirmed the Incline Beach House as a priority project and began laying out the design priorities for the project moving forward. In 2023, the Board gave the go-ahead to release a Request for Qualifications (RFQ) to potential design-build companies who might be interested in bidding on

“I’m confident the new Incline Beach House will be a beautiful addition to the world-class amenities that IVGID offers our residents and their guests,” Harrison said. “And I look forward to spending some time with the community at the new restaurant and bar, while listening to one of our great local bands at Music on the Beach in the years ahead.”

the project. Four design-build teams responded to the RFQ, with three being shortlisted for review by the Incline Beach House Project selection committee. Ultimately, after committee

review, the design-build team at CORE Construction was chosen to move the project forward for the District.

Throughout 2024 and 2025, the District’s project management team worked cooperatively with CORE Construction and the IVGID Board to refine the scope and budget of the project to best meet the community’s needs. And in December of 2025, following receipt of all subcontractor bids, a Guaranteed Maximum Price (GMP) was negotiated with CORE Construction, and the final construction contract was approved by the IVGID Board.

What is the Budget? And How Will IVGID Pay for This?

The current Capital Improvement Project budget for the Incline Beach House Project is \$11 million – an amount which has already been collected for use on this project through the Facility Fees.

The current forecast cost for the project, inclusive of both pre-construction and construction phases, is \$10,992,280 (which also includes the cost of IVGID’s staff time devoted to this project).

Project Budget Spent to Date	
Contracts to Date (30% Design, 100% Design, Topo, & Geotech)	\$908,550
Staff Time (7/1/23 - 11/17/25)	\$126,113
Sub-Total	\$1,034,663
Project Budget for Construction	
CORE's GMP Construction Contract	\$9,415,617
Owner's 2.5% Contingency	\$235,000
IVGID Staff Time (Estimated Through Construction)	\$132,000
Materials Testing & Inspections	\$75,000
Permitting (Estimated: TRPA, Washoe County & NV Energy)	\$100,000
Sub-Total	\$9,957,617
Total Project Cost	\$10,992,280

Scan the code for full details on the Incline Beach House project history.





Award Winner for LAKEFRONT PRESERVATION

BUILDING YOUR DREAMS

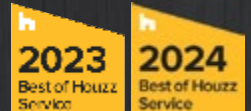
CALIFORNIA & NEVADA

RUBICON BAY - TAHOE CITY - INCLINE VILLAGE



LARGE RENOVATIONS, ADDITIONS AND NEW HOMES

Reinventing and Rejuvenating your Old Tahoe to Mountain Modern Home



Registration is limited to four Parks & Rec camps, and two swim lesson sessions per child.

SUMMER CAMP REGISTRATION SCHEDULE

Registration for all youth summer camps will take place in a phased series of events listed below.

April 24 & 25: IVGID Picture Pass holder Summer Camp In-Person Registration

Who: Individuals who have an active IVGID Recreation Pass (aka Picture Pass). All children registering must have their own pass. For children under 6 years old, the guardian with an active

IVGID Recreation Pass should apply for an Under 6 Pass through the Recreation Center before the registration dates.

Location: The Chateau (955 Fairway Blvd.)

Dates/Times:
Friday, April 24: 5 - 8pm
Saturday, April 25, 9 - noon

April 26 - May 3: IVGID Recreation Pass holders in-person & phone registration

Who: Individuals who have an active IVGID Recreation Pass. All children registering must have their own pass (see above).

Where: Incline Village Recreation Center (980 Incline Way), or call: 775.832.1310

Beginning May 4: Public in-person, online & phone registration

Who: Everyone
Where: Incline Village Recreation Center (980 Incline Way), or call 775.832.1310
Time: 9:30am

Summer Camp Cancellation Policy

Our cancellation policy allows for a full refund on camp registration fees if canceled prior to June 1. Changes and/or cancellations made between June 1 and 14 days prior to the start of the session are only entitled to a 50% refund. No-shows, changes, and/or cancellations made within 14 days of the start of the session are non-refundable.



Beach Summer Camp

Kids can look forward to a fun, engaging and exciting summer camp experience on the beach! Campers will explore the shoreline, swim in the Burnt Cedar outdoor pool, play sports and group games, create art, and climb and swing at the playground — all while enjoying the best parts of summer. Throughout the week, campers will build confidence, develop independence, and create lasting friendships and memories.

Ages: 5 - 10
Days/Dates: Monday - Thursday
Session 1: July 20 - 23, 9am - 4pm
Session 2: August 3 - 6, 1 - 5pm
Location: Burnt Cedar Beach (participants and guardians must have beach access)

DUNN-RITE RAIN GUTTER
Seamless Rain Gutters



YOUR LOCAL RAIN GUTTER EXPERTS

**SEAMLESS RAIN GUTTERS
COPPER GUTTERS
STEEL GUTTERS
LEAF GUARD
CLEANING AND REPAIR**

No job too small or too big!

**FULLY LICENSED,
BONDED &
INSURED**


**SENIOR & VETERAN
DISCOUNTS**

**LIFETIME
GUARANTEE**

SCAN QR OR
GIVE US A
CALL FOR
A FREE
ESTIMATE

775-355-7111
NV LIC #48823

All aquatics programs & summer camp fees and details are online. Scan the QR code for details.





Parks & Rec

Mini Lifeguard Camp

The Mini Lifeguard Camp is an introductory, fun-focused program for young children designed to build water confidence, safety awareness, and foundational beach skills.

Ages: 5 – 8 years old

Days: Monday – Thursday

Times: 9:30am – 12:30pm

Session 1: July 6 – July 9

Session 2: July 13 – July 16

Session 3: July 27 – July 30

Session 4: August 4 – August 7

Location: Burnt Cedar Beach (Participants must have beach access)



Session 2: July 13 – July 16

Session 3: July 20 – July 23

Session 4: July 27 – 30

4-week session: July 6 – July 30

Location: Incline Beach (967 Lakeshore Blvd.)

Junior Lifeguard Camp

Dive into summer with the Incline Village Junior Lifeguard Program!

This fun-filled and formative experience is designed for kids ages 9–14 who want to build confidence, strength, and teamwork while learning essential water safety skills.

Ages: 9 – 14 years old

Days/Times: Monday – Thursday, 9am – 1pm

Session 1: July 6 – July 9

TK Summer Basketball Camp

A great week of fundamentals, skills and games led by Incline High School head coach and former Division 1 college assistant basketball coach Tim Kelly.

Ages: 6 - 15

Days/Times: Monday - Friday, 9am - 1pm

Session: June 15 - 19

Location: TBD

INMOTION MECHANICAL

PROUDLY SERVING ALL OF TAHOE

NEVADA ☎ 775-686-3555 **CALIFORNIA** ☎ 530-210-2275

HYDRONICS AND HVAC EXPERTS

NV LICENSE: 0090393 & 0090640 CA LICENSE: 653502

Boilers	Radiant Heat	Air Conditioning	Auto Water Shut Offs
Hydronic Systems	Mini-Split System	Annual Services	Gas Lines
Heat Pumps	Wifi Thermostats	Forced Air	Water Heater



©VanceFox.com

Serving the Tahoe-Truckee area

530 582.7428

since 1979, carrying high-quality hardwood flooring and carpet ideal for your mountain home. Visit us and explore our amazing selection at the Pioneer Commerce Center in Truckee.

10800 Pioneer Trail, Unit 3,
Truckee 96161
office@bassettflooring.com
CA LIC #345494



YOUTH SUMMER CAMPS



Youth Beach Volleyball Camp

Bump, set, and spike your way through summer at the Youth Volleyball Camp, coached by Robert Power. This camp is perfect for young athletes looking to learn and improve their beach volleyball skills in a fun and supportive environment.

Ages: 6 - 14

Days/Times: Monday - Thursday, 9am - noon

Session 1: June 15 - 18

Session 2: June 22 - 25

Location: Ski Beach

Village Skate School Camp

We will have several amazing skateboarding sessions for skaters of all abilities this summer. Led by Cedar and Clayton, whether you want to learn how to skate or you want to improve your skills, these camps are for you!

Ages: 5 - 12

Days/Times: Monday - Friday, 8:30 - 11:30am

Session 1: July 6 - 10

Session 2: July 13 - July 17

Session 3: July 20 - July 24

Session 4: July 27 - July 31

Rowing Camp

Learn to row with Tahoe Crew! Our US Rowing-certified coaches will introduce you to the sport of rowing using modern

equipment and FAST boats. Students will learn both styles of rowing (sweep and scull) and have the opportunity to race against one another.

Ages: 13 - 17 years old

Days/Times: Monday - Friday, 7 - 10am

Youth Beginner Session - July 13 - 17

Youth Advanced Session - July 20 - 24

Location: Incline Beach (967 Lakeshore Blvd.) - participants must have beach access

Recreation Summer Camp

This Camp offers a fun, structured, and engaging camp experience based out of the Recreation Center. Campers will enjoy a variety of age-appropriate games, sports, creative activities, and supervised free play both indoors and outdoors. Each day is designed to keep kids active, social, and engaged in a safe and supportive environment. Throughout the summer, campers will

[TREE SERVICE] 530-386-3340 • estatetreeservices.com



estate
LANDSCAPE & TREE SERVICE

CA 513623 | NV 33717B

Spring is here in Lake Tahoe, and now is the perfect time to prepare your property for the season ahead. After a long winter, trees often need attention from removing storm-damaged limbs to thinning overgrowth and improving tree health.

At Estate Tree Service, we help Incline Village and Lake Tahoe Homeowners keep their properties safe, beautiful, and well maintained.

Our professional crew specializes in:

- Tree trimming & pruning • Hazard tree removal • Storm damage cleanup
- Fire defensible space clearing • Seasonal property maintenance • Tree removal

Schedule your spring tree service today and get ahead of the season.

[LANDSCAPE] 530-546-2042 • estatelandscape.com

build confidence, develop teamwork and social skills, and create lasting friendships and memories.

Ages: 5-10

Session 1: June 22 - 25, 9am - 4pm

Session 2: July 6 - 9, 1 - 5pm

Session 3: July 13 - 16, 1 - 5pm

Session 4: July 27 - 30, 1 - 5pm

Ages: 5 - 10 years old

Days: Monday - Thursday

Location: Recreation Center

Paddleboard Camp

Join us for fun in the sun on Lake Tahoe! Participants will engage in land and water-based games and exercises that increase SUP skills/knowledge and target your overall fitness level.

Ages: 8 - 14 years old

Days/Times: Monday - Thursday, 9am - 1pm

Location: Ski Beach (Participants must have beach access)

Session 1: July 6 - July 9

Session 2: July 13 - July 16

Session 3: July 20 - July 23

Session 4: July 27 - July 30

Session 5: August 3 - August 6

Youth Tennis Mini Munchkins

A perfect opportunity to develop our youngest tennis players. Enrollment is available in monthly sessions.

Ages: 4 - 5

Days/Dates: Tuesdays & Thursdays, June - August

Times: 5 - 5:30pm.

Youth Tennis Munchkins

A perfect opportunity for youth to develop a special love of tennis. Enrollment is available in monthly sessions.

Ages: 6 - 7

Days/Dates: Tuesdays & Thursdays, June - August

Times: 4:15 - 5pm

USTA Quickstart Camps

Weekly tennis camps focus on stroke production, techniques, match play and tennis rules through specialized activities and drills. The camp also promotes teamwork, sportsmanship and a high emphasis on fun! Camps are taught by certified USPTA instructors.

Ages: 6 - 10

Days/Times: Monday - Thursday, 1 - 4pm

Multiple sessions available

Tennis High School Camp

Technical instructions, drills and conditioning for high schoolers who have some tennis experience.

Ages: 14 - 18

Days/Times: Monday - Thursday, 1 - 4pm.

Dates: TBD

Youth Pickleball Camp

Pickleball camps focus on learning and developing your technical skills, pickleball rules and games through specialized activities and drills. Camps are taught by specialized pickleball pros.

Ages: 6 - 10

Days/Times: Monday - Thursday, 1 - 4pm

Dates: August, multiple session available

Friday Youth Pickleball Clinics

A mini version of our Pickleball camp and a great add-on to our other camps. Get an introduction to pickleball through specialized activities and drills.

Ages: 6 - 10

Days/Times: Fridays, 1 - 4pm

Dates: Mid-June - August



TAHOE MUSIC
Alive

A NEW SEASON OF
WORLD-CLASS CLASSICAL AND JAZZ
COMES TO FRIENDLY NORTH TAHOE SPACES

SCAN FOR INFORMATION
OR VISIT TAHOEMUSICALIVE.ORG

Logos for sponsors: Truckee, Tahoe, NTCA, and others.



AN IN-DEPTH LOOK INTO OUR AQUATICS PROGRAMS

By Gwynne Cunningham, Recreation Supervisor

One of the missions of the Incline Village General Improvement District is to deliver exemplary recreational experiences. Through this mission, the Aquatics team has developed programming that has evolved throughout the years, adjusting to our community's needs. Today, the Aquatics team leads a group of 70 staff, including lifeguards, swim instructors, and coaches. Our team conducts safety training for staff as well as community members. These trainings include First Aid, CPR/AED, Lifeguarding and Aquatic Skills.

The Aquatics team serves the community by managing the district's pools and beach facilities. The Recreation Center Pool, built in 1992, is an indoor 25-yard competition pool that provides opportunities for year-round programming and recreational use. The Burnt Cedar Pool, built in 2022, is a seasonal community pool that sits overlooking Lake Tahoe.

Through our various summer camps, the Aquatics team teaches children ages 5 and up about pool and beach safety, as well as lifeguarding and paddling skills.

Goals

We strive to continue serving the community by offering diverse aquatic programs that cater to different interests and needs such as aqua fitness, water polo, swim team, swim lessons and swim stroke clinics.

We hope to foster a culture of professionalism and pride by nurturing continuous growth and development among staff members. And we want to encourage innovative thinking to enhance program quality and expand existing offerings.

Finally, we want to maintain the availability of both group and private swim lessons, ensuring smooth progressions from Basic Water Safety to more advance aquatic programs and camps.

Accomplishments

Our Learn To Swim program, consisting of both group and private lessons, continued to see high enrollment.

Both the Northern Nevada Aquatics Swim Team and Pre-Swim Team participation continued to see success this year. Through the hiring and training of new and existing coaches, we had multiple athletes represent

Ranked #1 Agent for Lake Tahoe, NV
BY SALES VOLUME

REAL TRENDS VERIFIED 2025

Lexi Cerretti | COMPASS
Tahoecon.com | 775.833.1646 | Lexi@Compass.com | S.75552

Compass California LLC is a licensed real estate broker and abides by Equal Housing Opportunity laws. All material presented herein is intended for informational purposes only and is compiled from sources deemed reliable but has not been verified. Changes in price, condition, sale or withdrawal may be made without notice. No statement is made as to accuracy of any description. All measurements and square footage are approximate. If your property is currently listed for sale this is not a solicitation. LiveTrends is a team of real estate agents affiliated with Compass Nevada, LLC, a licensed real estate broker and abides by Equal Housing Opportunity laws. All material presented herein is intended for informational purposes only. Information is compiled from sources deemed reliable but is subject to errors, omissions, changes in price, condition, sale, or withdrawal without notice. This is not intended to solicit property already listed. Photos may be virtually staged or digitally enhanced and may not reflect actual property conditions.

Incline in USA Swimming sanctioned meets throughout the year.

The Aquatics team held Jr. Lifeguard Camp, Mini Guard Camp, Rowing Camp, Beach Camp, and Paddleboard Camp.

Our fifth season at the newly designed Burnt Cedar Pool drew large crowds during the summer season, which spanned from mid-May to late September this year. In addition to lap and open swim, we held our very popular Aquacize classes, group swim lessons and our Summer Splash swim program.

Community Impact

About one in five drowning deaths are children 14 years of age and under. Learn to Swim Programs are critical in reducing these statistics. We offer both private and group swim lessons for those 6 months through adulthood.

Our Swim Team, Pre-Swim Team, and Junior Lifeguard Programs offer skill development that can save lives. Youth participating in these programs often go on to join our team as lifeguards and swim instructors.

Swim Around Tahoe and the Masters Swim Team programs are both aimed at our adult community members providing an

opportunity to challenge themselves and continue to achieve their overall fitness goals.

Through training including Lifeguarding, Water Safety Instruction, First Aid and CPR/AED training, the Aquatics team helps to create a safer, healthier community in and out of the water.

Our goals remain to continue to improve the variety of aquatic programming that provides for the needs of the community, continuing to enhance our cohesive training plan for staff and to further develop a reputation for Incline Aquatics as the leader in Lake Tahoe for year-round aquatics programming. We strive for a safe environment at the Recreation Center, the beaches and at Burnt Cedar Pool. Our lifeguards are the first responders for these venues, and our customers rely on them for medical aid, rescue, injury prevention and safety enforcement. Additionally, the Aquatics team will continue to work with outside agencies for support and growth of our training and programming. We look forward to another great summer!



- Experienced, professional bartenders
- Stress-free setup to cleanup
- Friendly service your guests will love

Want a unique experience for your event?
Try our Interactive Mixology Classes!

WEDDINGS
SMALL PARTY BARTENDING
CORPORATE EVENTS & MORE

Bartending That Keeps The Party Flowing.



775.544.2990
www.775bartending.com



Elise Fett & Associates, Ltd.

WWW.ELISEFETT.COM
775-833-3388
NV, CA & HI LICENSED



GROUP SWIM LESSONS

Group Swim Lessons are offered for youth 6 months to 12 years of age. Programs follow the American Red Cross Learn-to-Swim guidelines. Class maximum is four students for Levels 1 & 2 and six students for levels 3 & 4. Please refer to the Swim Lesson level descriptions online: www.inclinerecreation.com. If your child is between two levels, please register for the lower level (the instructor can provide more advanced skills to work on if needed).

All Burnt Cedar Swim Lesson participants and guardians must be valid IVGID Picture Passholders with beach access. If you have any questions or comments about swim lessons, please feel free to email the Aquatics Office Aquaticschedule@ivgid.org.

Burnt Cedar Morning Lessons

- Session 1:** July 6 - July 9
- Session 2:** July 13 - July 16
- Session 3:** July 20 - July 23
- Session 4:** July 27 - July 30
- Session 5:** August 3 - August 6

Times:

- Parent/ Tot:** 11:25 - 11:55am
- Level 1:** 10:15 - 10:45am
- Level 2:** 10:50 - 11:20am
- Level 3:** 11:25 - 11:55am
- Level 4:** 11:25 - 11:55am

Youth Swim Clinic

Youth Swim Clinic will focus on stroke development and overall swimming endurance. Coaches will work with kids to foster a sense of team building and camaraderie through creating a fun and motivating experience.

Ages: 5 - 10 years old

Days/Times:

Session 1a: Mon/Wed: May 27 - June 22, 6:15 - 7pm

Session 2a: Mon/Wed: July 6 - July 29, 6 - 7pm

Session 3a: Mon/Wed: August 3 - August 26, 6:15 - 7pm

Session 1b: Tues/Thurs: May 26 - June 18, 9 - 9:45am

Session 2b: Tues/Thurs: July 7 - July 30, 9 - 9:45am

Session 3b: Tues/Thurs: August 4 - August 13, 9 - 9:45am

Location: Burnt Cedar Pool

Water Safety Instructor Course

Learn to be a Water Safety Instructor and teach swim lessons. This class breaks down each stroke and trains you to teach swimming to anyone by incorporating creative teaching methods, covering basic water safety techniques.

Ages: 16+ years.

Location: Incline Village Recreation Center Pool
Details on line soon.

American Red Cross Lifeguard Classes

These sanctioned courses encompass: Lifeguarding, CPR for the Professional Rescuer, First Aid, and AED Certifications. All applicants must be able to pass a skills pre-requisite swim test. Must attend all classes and complete all online coursework to be eligible for the final exam.

Requirements: Must be able to swim 250 yards continuously, tread water for 2 minutes without hands, and retrieve a 10 lb. dive-brick from the bottom of the pool.

Must create an account with American Red Cross and complete the online component prior to class.

Ages: 15 +

Session 2: May 23 - 25, 10am - 7pm

Session 3: June 16 - 19, 10am - 6pm

Pre-Swim Team/Northern Nevada Aquatics Swim Team (NNA)

Incline's premier swim teams for both competitive and novice swimmers. Our USA Swimming certified coaches will evaluate appropriate levels and practice times for each participant. For those who are participating in USA Swimming competitions, the opportunity to travel to USA swim meets will be available. Swim team fees are due monthly. Please refer to the Swim Team level descriptions on the website.

Ages: 6+.

Swim Around Tahoe

Complete this program by swimming in the pool, the lake, or whatever facility you desire! Just record your yardage and we will track your progress. Upon completion of the 71-mile journey you will receive a T-shirt and your name on the "Finisher's Plaque" at the Recreation Center pool. This is an ongoing program for all ages with annual registration. All ages.



THE RITZ-CARLTON

LAKE TAHOE



Spring Renewal Awaits

This spring, reconnect mind and body to the surrounding nature. Located on the mountain side covered in towering pines, The Ritz-Carlton Spa, Lake Tahoe invites you to unwind with seasonal treatments and immersive experiences inspired by the Tahoe landscape. From a deeply restorative Custom Organic Facial or signature Lake Tahoe Stone Massage, to grounding practices like Alpine Yoga or Forest Bathing & Sound Healing, each moment is thoughtfully designed to help you relax, restore balance, and emerge feeling completely renewed.

We appreciate the continued support of our neighbors and are delighted to extend Locals Card benefits, featuring exclusive offers for local residents. Contact us at 530-562-3051 to learn more.



Topgolf Swing Suites

Perfect for families, team bonding, or a fun night out, step into the Topgolf Swing Suites for a lively atmosphere. Enjoy your own state-of-the-art virtual gaming experience, curated cocktails from a full-service bar, elevated casual menu, personal guest experience attendant, and shuffleboard table.



Montesa, Cantina Moderna

Recently opened, Montesa, Cantina Moderna is The Ritz-Carlton, Lake Tahoe's new slopeside restaurant, serving traditional Mexican street food and craft cocktails, reimagined. Indulge in bold flavors, refuel, gather, and raise a glass to the moment.

COMMUNITY & EMPLOYEE FITNESS CHALLENGE

By Kimberly Monte, Recreation Supervisor, Fitness, Health & Wellness

This winter, employees and community members came together to participate in the highly anticipated annual fitness challenge, Conquer the Cold. This dynamic and engaging event not only promoted physical well-being but also fostered teamwork, camaraderie, and a shared commitment to health and wellness.

Participants formed teams and earned points through a variety of activities, including skiing, snowboarding, snowshoeing, swimming, biking, running, walking, stair climbing, strength workouts and attending fitness classes. The diverse range of exercises ensured that everyone, regardless of fitness level, had opportunities to contribute and stay active. Beyond physical activities, the challenge incorporated educational and wellness opportunities to support participants' overall well-being. The nutrition session featured insightful discussions with our registered dietitian and certified nutritionist offering valuable knowledge on health,

nutrition, and participants took away healthy eating tips and recipes.

Prizes and awards were given at the conclusion of the competition, celebrating teams for their dedication and hard work throughout the four-week journey. Congratulations to all participants for their commitment and enthusiasm! Here's to many more fitness challenges.



NUTRITION TIP: MEAL HYGIENE & DIGESTION

By Jill Whisler, Registered Dietitian & Certified Nutritionist

We have all heard of hand hygiene or even sleep hygiene, but how often do we talk about meal hygiene? A healthy digestive system is responsible for breaking down food, absorbing nutrients, and eliminating waste from the body. Many recommendations for improving digestive health focus on the foods we eat, but how you eat is also

key! Eating mindfully can improve how well your digestion works!

We need to start with creating mindfulness when we eat. This also allows you to experience both sides of eating: physical and mental. Mindfulness impacts the gut in one specific, but powerful way: stress management. The body has two primary nervous system responses: 'Rest and Digest' & 'Fight or Flight'. When eating, your body kicks into 'Rest and Digest' allowing it to relax and focus on properly digesting food. 'Fight or Flight' occurs when the body is under stress. Prolonged stress makes it harder to move into a more restful state, which can make it harder for the body to digest food, which can contribute to digestive issues. It has been shown that increased stress is common in people with gastrointestinal disorders.

How can you get started?

- Eat slower! Let your senses get an idea of what just went flying past your tongue!
- Put the fork down between bites.
- See if you can pace yourself to the slowest eater in the room.
- Are you stressed and just eating? Pay attention to why you are eating.
- Consider working with a dietitian to create some specific regimes that could support your health goals.

classical | tahoe

DISCOVER FOUR WEEKS OF CLASSICAL AND JAZZ CONCERTS UNDER THE PINES

2026 FESTIVAL
JULY 11 - AUGUST 9

Featuring Tchaikovsky's *Piano Concerto No. 1*, Beethoven's *Symphony No. 7*, the music of jazz legend Dave Brubeck, dancers from premier ballet companies, and works by Mozart, Brahms, and more.

PURCHASE TICKETS
CLASSICALTAHOE.ORG | 775-298-0245

PROUDLY PRESENTED ON THE CAMPUS OF THE UNIVERSITY OF NEVADA, RENO AT LAKE TAHOE



SOUND BATH MEDITATION

Immerse yourself in the soothing tones of a sound bath, a practice that transcends time and culture to offer profound relaxation and healing. As you settle into a comfortable position, whether seated or lying down, allow yourself to let go of any tension or worries. The sound healer begins to create a symphony of vibrations using various instruments such as singing bowls, gongs, chimes, and drums, each emitting its unique frequency. Whether you're a seasoned meditator or new to the practice, a sound bath offers a unique opportunity to deepen your relaxation and enhance your overall sense of wellness. Treat yourself to this ancient practice and discover the transformative effects of sound on your mind, body, and soul!

TAI CHI

This Chinese martial art focuses on slow, flowing movements, deep breathing, and mindfulness. It is often practiced for its health benefits, including improved balance, flexibility, and stress reduction. Rooted in traditional Chinese philosophy, Tai Chi emphasizes harmony between mind and body, incorporating principles of yin and yang. It is also used as a form of meditation in motion and can be practiced by people of all ages and fitness levels.

PERSONAL TRAINING

Reaching your fitness goals can feel overwhelming, but you don't have to do it alone. Personal training provides expert guidance, accountability, and a customized plan designed specifically

for you. No two people are the same. Personal trainers create individualized programs based on your goals, fitness level, and health history. Whether you want to lose weight, build strength, improve mobility, or boost overall wellness, your workouts are structured to help you progress safely and efficiently.

Consistency is key. With scheduled sessions, progress tracking, and professional support, you're far more likely to stay committed and see measurable results. Trainers also ensure proper form and smart progression, reducing injury risk while maximizing effectiveness.

If you're using GLP-1 medications as part of your weight management journey, exercise is essential. Our personal trainers understand how to support clients on GLP-1 therapy by focusing on preserving lean muscle, supporting healthy fat loss, improving metabolic health and building long term strength and energy. The combination of medication and structured training helps you achieve sustainable, healthy results.

Voted "BEST FAMILY SHOP" in AMERICA! 



BOBOS

SKI-BOARD-RENO

5 minutes from the Reno/Tahoe Airport Open 7 days a Week

SKIS / SNOWBORDS / RENTALS

APPAREL / SEASON LEASES / SHOP SERVICES

(775) 826-9096 475 E. MOANA LANE RENO, NV BOBOS.COM



GROUP FITNESS CLASSES

Group fitness classes offer an energizing and effective way to improve your health while staying consistent. With expert instruction, motivating music, and a supportive atmosphere, they make working out both productive and enjoyable.

Exercising alongside others creates energy and encouragement that's hard to replicate on your own. The group setting helps you stay accountable and often pushes

you to work a little harder. Group fitness builds connection. The shared experience fosters friendships and a sense of belonging, making it easier to stick with your routine long term. If you're looking for motivation, structure, and community, group fitness classes are a powerful way to reach your goals.

NUTRITION

Fitness is only part of the equation—nutrition plays a major role in your success. We encourage you to meet with our Registered Dietitian/Certified Nutritionist to create a personalized nutrition plan that supports your goals, workouts, and overall health. With the right training and nutrition support, your goals aren't just possible, they're achievable.

ORTHOPEDICS & SPORTS MEDICINE

*Reach
higher.*

[InclineHospital.com/orthopedics](https://www.InclineHospital.com/orthopedics)



INCLINE VILLAGE
COMMUNITY HOSPITAL



RENO TAHOE DERMATOLOGY
Medical · Cosmetic · Surgical

Dr. Billie Casse DO., FAAD, FAOCD

Does your reflection inspire confidence? No? Let us help you change that. New year, new you!

We're dedicated to helping you achieve radiant skin. Whether you're seeking advanced medical dermatology solutions, the latest in cosmetic treatments, expert esthetician services, or innovative weight loss and body sculpting options, our team is here to guide you on your journey! **Call to schedule an appointment today!**

Comprehensive Skin Care Routine

- Aviclear for prevention and long term treatment for acne
- RF microneedling with SecretRF
- RF microneedling with fractionated CO2 with Secret PRO
- RF microneedling with non ablative Erbium Glass
- Resurfacing with Secret Duo
- Get rid of sun spots and redness with Excel V laser
- Reduce wrinkles with Daxxify, dysport or Botox
- Add volume and shape to areas with volume loss or to enhance features with Fillers such as RHA or Juvederm
- Tone and Sculpt your body with TruBody devices

Mention this ad for 10% off any body sculpting procedure



Reno, Sparks, Spanish Springs, Sun Valley, & Lake Tahoe - we're your local experts in dermatological excellence.
5452 Reno Corporate Drive, Reno, NV | 775.245.2426 | renotahoederm.com





Parks & Rec



Coed Softball Leagues

Teams play a total of 8-10 league games. The top four teams from each division qualify for playoffs. Games will be played at Ridgeline Park #1 field.

Ages: 18+

Days: Wood Bat (Tues.), Open League (Wed.) & Coed (Thur.)

Date: June 17- August 26

Time: 6 - 10pm

Fee: Team registration fee
Registration opens May 5

Coed Soccer League

Teams play a total of 8-10 league games. The top four teams from each division qualify for playoffs.

Ages: 18+

Days: Mondays

Date: June 15 - August 24

Fee: Team registration fee



Sierra Verde

HOME DESIGN

INTERIOR DESIGN | HOME STAGING | SHOWROOM | WINDOW COVERINGS

VILLAGE CENTER, INCLINE VILLAGE | 775.831.2204 | SIERRAVERDEGROUP.COM



COMEDIAN
**PAUL
REISER**

**SATURDAY
MAY 2, 2026**

TO PURCHASE TICKETS
PLEASE SCAN QR CODE



atlantiscasino.com/paul

Atlantis
CASINO RESORT SPA • RENO™

Must be 21. Management reserves all rights.



The four IVGID-managed restricted-access beaches - Ski Beach, Incline Beach, Burnt Cedar Beach, and Hermit Beach - are located on Lakeshore Drive between the Hyatt Regency Lake Tahoe Resort and State Route 28. Incline Village beaches are restricted-access- please refer to our website, InclineRecreation.com, for rules, access restrictions, and recreation privileges.

INCLINE BEACH
967 Lakeshore Blvd.



Incline Beach has a nice sandy beach and swimming area if you need to jump in the water to cool off. There are several picnic areas, a playground and shady areas to enjoy the view. During the summer of 2026, Incline Beach will be affected by the Incline Beach House construction project (see pages 6 - 10 for details), but will still be open to IVGID Pass holders and their guests.



SKI BEACH
967 Lakeshore Blvd.

Ski Beach has a boat ramp, picnic areas, two volleyball courts, a bocce ball court, a creek running through, lush grassy areas and trees to provide leisurely shady walks. There are kayak/canoe/paddleboard storage rentals and an easily accessible boat ramp. Ski Beach will also host the popular Music at the Beach Summer Concert series for 2026.

HERMIT BEACH
967 Lakeshore Blvd.

Hermit Beach is the small beach on the east side of Incline Creek, next to the Hyatt Regency Lake Tahoe.

BURNT CEDAR BEACH
665 Lakeshore Blvd.

Burnt Cedar offers an outdoor pool with waterslide and an adjacent toddler pool, a small sandy beach with a protected swimming cove, a large grassy point with benches, playground and multiple group picnic areas. The snack bar offers a selection of food, drinks, and craft cocktails.

**2026 BEACH
ADMISSION RATES**

Adult (18+)	\$18
Youth (6 - 17)	\$10
Children (0 - 5)	FREE
IVGID Picture Pass Holder	FREE

**SEASONAL
WATERCRAFT PARKING**

Need a place to park your boat this summer? A limited number of Seasonal Watercraft Parking Passes will be available for IVGID Recreation Pass holders this summer. The assigned spots are located on Ski Way below Diamond Peak Ski Resort. Passes will be available at the Incline Village Recreation Center soon. Season is May 1 – Sept. 31.

Premier & standard spots available.

2026 BOAT LAUNCH RATES

Round-Trip Ramp Use	\$28
One-Way Ramp Use	\$17
Annual Launch Pass	\$275



Parks & Rec



PARKS

Group Picnic Reservations

Celebrate outdoors in one of our reservable picnic areas at the beach or park. Barbecues and picnic tables are available for your gathering. For reservations and other IVGID facility rental information, please call 775.832.1310.



PEDALING FORWARD: PHASE II BEGINS AT THE INCLINE BIKE PARK

By Kari Ferguson

Momentum is building once again at the Holman Family Bike Park. Beginning in May 2026 (weather permitting), construction crews will mobilize for Phase II of the long-

Continued on page 30

Protecting your financial future with tailored insurance plans.



Sofia Malachowsky



INCLINE LIFE
CONSULTING GROUP

Comprehensive Insurance Solutions

Life Insurance
Long-term Care
Disability
Annuity Solutions

Schedule a free consultation

NV #899012
CA #0E07375

310.806.3631
www.inclinelifecg.com

- PAVING & PATCHING
- SEALCOATING
- CRACK SEALING
- STRIPING
- SIGNAGE
- COMMERCIAL & RESIDENTIAL

Full Service Parking Lot & Driveway Specialists

FREE Estimates!



LAKEESIDE

Paving & Sealing, Inc.

530 **583-3600**

LakesidePaving.com Tahoe Truckee CA NV



CA Lic. #829462
NV Lic. #69490

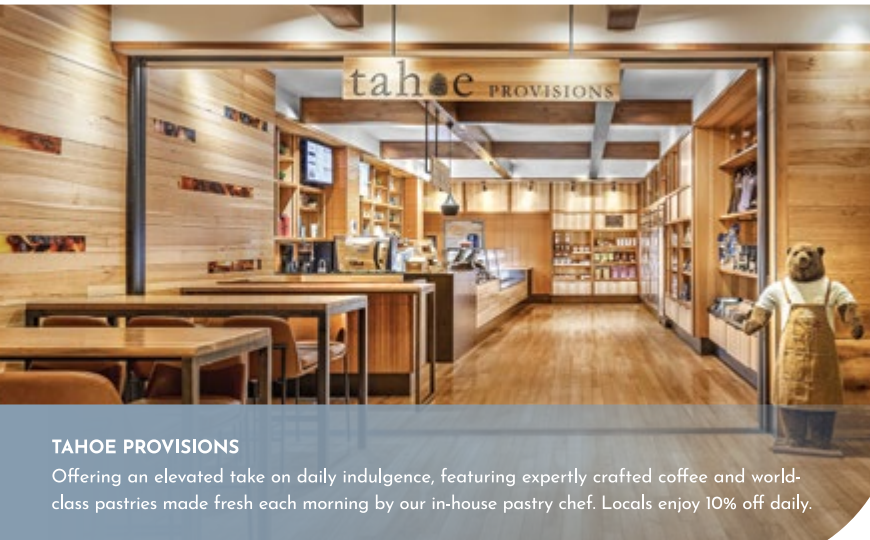
Osteria
SIERRA
LAKE TAHOE. NV

Open daily, Osteria Sierra brings a refined sense of Italian hospitality to the shores of Lake Tahoe, blending the warmth of a classic osteria with the understated elegance of an alpine retreat. Evenings showcase indulgent dining with house-made pastas, fresh seafood, expertly prepared steaks, and decadent desserts crafted with exceptional ingredients, including produce sourced through the Tahoe Food Hub to honor the flavors of the region. Weekend Afternoon Tea and our Wine Lounge offer even more ways to unwind close to home - and **locals enjoy 10% off all meals and events.**

Follow us to stay informed on seasonal menus, special events, and the latest culinary inspirations.

 @Osteriasierra  @Osteriasierra





TAHOE PROVISIONS

Offering an elevated take on daily indulgence, featuring expertly crafted coffee and world-class pastries made fresh each morning by our in-house pastry chef. Locals enjoy 10% off daily.



STILLWATER SPA

A serene alpine retreat inspired by the restorative energy of Lake Tahoe, offering thoughtfully curated treatments designed to renew balance. Experience our new cryotherapy chamber to treat joint pain, reduce inflammation and boost recovery. Locals receive 10% off all spa treatments and wellness events.



CUTTHROAT'S SALOON

Bringing together great food, cold beer, and the best seat in the house for every game featuring elevated pub classics, late-night bites, and a welcoming atmosphere for families. IVGID picture pass holders enjoy an exclusive 20% off on Mondays, 10% off every other night.



Local Appreciation

As a heartfelt thank-you to our incredible Incline community, we're pleased to offer **10% off every day** when you present your **IVGID Picture Pass**. We're also happy to **validate self-parking** when you dine in any of our restaurants or enjoy the spa. It's our way of showing appreciation for the locals who make Tahoe such a special place to live, work, and gather.

111 Country Club Drive, Incline Village, Nevada 89451, USA | +1 775 832 1234 | hyattregencylaketahoe.com

Paid Advertisement: Hyatt Regency Lake Tahoe Resort, Spa and Casino is proud to support IVGID and our local community. Locals offer valid for Hyatt Regency Lake Tahoe Resort only. For room booking: must present IVGID picture pass or photo copy of IVGID picture pass to ensure locals discount is applied to room rate. Blackout dates include December 31, 2026 - January 1, 2027. 20% food and beverage discount on Monday valid only in Cutthroat's Saloon from 5:00 p.m. - 7:00 p.m. Must present IVGID picture pass to receive food and beverage discount. Discount applies to two people per IVGID picture pass. Spa discount not valid on retail items. Hyatt reserves the right to alter or cancel this offer at any time. The Hyatt trademark and related marks are trademarks of Hyatt Corporation or its affiliates. ©2026 - 2027 Hyatt Corporate. All rights reserved.



anticipated expansion—temporarily closing the park as improvements get underway. The upgraded facility is expected to reopen in July 2026.

From Vision to Vibrancy

Originally designed in 2016, the park’s Phase I construction wrapped in the summer of 2017. In October 2017 families gathered to celebrate its grand opening. What followed was exactly what the community had hoped for: afternoons filled with young riders honing their balance and confidence, seasoned cyclists pushing their limits, and a steady buzz of activity that turned the park into a daily destination.

Phase I established the foundation for progression-based riding in Incline Village. It included:

- A beginner pump track
- Beginner and intermediate flow lines
- An advanced jump track

The thoughtful layout allowed riders to build skills methodically—moving from introductory features to more technical elements as their abilities evolved. The success of that initial phase generated strong enthusiasm for completing the park’s original vision.



Phase II: Raising the Bar

Phase II construction, scheduled to begin in May 2026, will complete the remaining scope of the master plan. The centerpiece of this expansion is the addition of an advanced pump track designed specifically for a broader demographic of users.

The new features will:

- Expand the opportunity for all levels of users
- Enhance the park’s progression-based design
- Further diversify the riding experience

The advanced pump track will provide a dynamic, technically challenging environment that complements the existing infrastructure, ensuring the park continues to serve riders at every stage of development.

A Community-Driven Success Story

The bike park’s growth would not be possible without the dedication of local advocates, Elko James and Village Ski Loft Family. Volunteers have contributed countless hours to fundraising, planning, building, and maintaining the park. Their stewardship has transformed the facility from a concept into a thriving recreational asset.

TAHOE FOREST HEALTH SYSTEM IS LOOKING FOR YOUR INPUT!

TFHS has launched True North – a comprehensive, community engagement initiative. How can we make it easier for everyone to get the care they need? What services or programs do you need the most?



Take our brief survey by scanning the QR code below or visiting tfhd.com/true-north

Your voice matters and will help shape the future of healthcare in our region.



“My favorite part about the bike park is that there is something for everybody whether you are a complete beginner to a skilled biker you can still have fun at the bike park” -14 year old Trey Lintzer

What to Expect this summer

During construction, the bike park will be closed to ensure public safety and allow crews to efficiently complete the expansion. Riders can look forward to a refreshed and enhanced facility when the park reopens in July 2026.

For additional information about the park’s history, project, and the robust community support network behind it, please scan the QR code.



The next chapter of the Holman Family Park is about to take shape—continuing a story built on momentum, collaboration, and Robert Holman & Elko James' shared passion for riding.

SKATE PARK ENHANCEMENTS SET TO ROLL OUT THIS SUMMER

Big improvements are on the horizon for the community’s Skate Park, with construction scheduled to begin May 1 (weather pending) as part of a major enhancement and expansion project. The park will be temporarily closed during construction, with a targeted reopening in July 2026.

Design Details

At the heart of the project is the addition of a new beginner-friendly zone – a thoughtfully designed space that will provide a welcoming environment for younger riders and those new to skateboarding and wheel sports. The expansion not only broadens access and inclusivity but also creates a natural progression within the park, allowing skaters to build skills and confidence before transitioning into more advanced features.

These updates ensure that the Skate Park continues to meet current design standards while preserving the character and flow that regular users value.

The popular Village Skate School camps will return in August 2026 following completion of construction, offering young

skaters the opportunity to experience the upgraded facility in a structured and supportive setting.

Funding the Dream

Funding for the Skate Park Enhancement Project reflects a strong partnership between local and regional resources. The project is supported through IVGID’s Community Services Fund, along with a \$250,000 American Rescue Plan Act (ARPA) grant from Washoe County.

About the Design & Construction Team

Leading the design and construction is Spohn Ranch, a Los Angeles-based firm recognized internationally for its custom concrete skateparks and action sports facilities. With hundreds of projects completed worldwide, Spohn Ranch is known for creating innovative, progression-based environments that serve riders of all ages and skill levels.

Driven by a deep-rooted passion for skateboarding and wheel sports, the Spohn Ranch team – including landscape

Continued on page 32



Conceptual design for the Skate Park Enhancement Project.

PARKS

designers, iron workers, grading specialists, and ACI-certified shotcrete nozzlemen — brings architectural precision and craftsmanship to every project. Their approach balances aesthetics, durability, and rideability, ensuring the finished park is as functional as it is visually dynamic.

What to expect this summer

When the Skate Park reopens in August, the community can expect a refreshed, expanded facility designed to inspire the next generation of riders while enhancing the experience for seasoned skaters alike.



For Skate Park Project updates, please scan QR Code

Skatepark Flow 101

By Cedar Gately & Clayton Green, Founders of Village Skate School

Designing skateparks with features for different skill levels isn't just smart planning — it's what makes a park truly inclusive. When a space includes smaller ramps, mellow banks, and low-impact obstacles alongside more technical ledges, rails, and transition, it creates a natural progression system within the same environment.

For beginners, especially younger kids, having scaled-down features makes a huge difference. Learning to push, roll in, or carve a bank is intimidating enough without the added pressure of towering quarter pipes or fast-moving older skaters. Smaller obstacles give them a safe place to build confidence, develop fundamentals, and understand skatepark etiquette at their own pace.

At the same time, advanced skaters benefit from more challenging elements that keep them engaged and inspired. Technical features push creativity and progression, ensuring the park doesn't feel stagnant once skills improve. When both ends of the spectrum are considered, the result is a dynamic space where mentorship happens naturally — younger skaters watch, learn, and grow into the bigger terrain over time.

A well-designed skatepark isn't about separating ability levels. It's about creating flow and opportunity for everyone. By blending beginner-friendly features with advanced terrain, parks become welcoming community hubs where intimidation fades and progression thrives.



YOUR TAHOE HOME, MANAGED WITH EASE AND EXPERTISE.

Permits, inspections, and late-night guest calls are draining. ManageHome handles property management — so you can enjoy your Tahoe home stress-free. Please reach out for a free consultation.

FREE ESTIMATE



SIMPLE. LOCAL. RELIABLE. READY
www.managehome.net
530.500.2777





RECREATION CENTER HVAC REPLACEMENT PROJECT

Modernizing the Heart of the Community: Incline Village Recreation Center HVAC Upgrade Begins this May

Since opening in 1992, the Recreation Center has served as a year-round hub for fitness, aquatics, youth programs, and community connection. For more than three decades, the facility’s original HVAC system has quietly supported everything from early-morning lap swims to evening fitness classes. Now, that foundational infrastructure is ready for a long-overdue upgrade.

Installed at the time of construction in 1992, the existing HVAC system has reached the end of its service life. Aging mechanical components, declining efficiency, and increasing maintenance demands have made comprehensive replacement both necessary and urgent. Rather than continuing short-term repairs, the District is moving forward with a replacement strategy designed to ensure long-term reliability.

Construction is scheduled to begin May 4 and will continue through September 2026.

Visitors should anticipate temporary impacts to operations during construction. These may include off site programming, limited access to certain areas, or short-term closures related to mechanical tie-ins and equipment installation.

As construction progresses, members are encouraged to stay informed and plan visits accordingly.

Detailed information about anticipated impacts, along with updates, are available by scanning this QR Code.



In the fight against breast cancer, technology is saving lives. Since 1990, breast cancer deaths in the U.S. have dropped by 40%, thanks to routine mammography. Early detection remains one of the most powerful tools—if you use it.

Thanks to the generosity of The Helmsley Charitable Trust and our donors, Incline Village Community Hospital now offers advanced Diagnostic Imaging services, including Genius AI™ 3D Mammography™ with enhanced detection technology. Rated by the FDA as superior for women with dense breast tissue, this exam helps physicians detect small cancers and masses that may be hidden in traditional 2D mammograms, leading to earlier treatment and better outcomes.

Support from The Helmsley Charitable Trust helped secure \$3.7 million for

advanced diagnostic equipment typically found only in larger urban centers. With an additional \$3.2 million raised locally, IVCH now offers a 128-slice CT scanner, fixed X-ray, Point-of-Service Ultrasound, and 3D Mammography.

Having access to lifesaving mammography close to home reduces travel time and makes it easier to prioritize your health. IVCH currently schedules mammography appointments three days a week for convenient community access.

Schedule your 3D Mammography today by calling (530) 582-6510. Walk-in or next-day appointments may be available. With donor support and the latest technology, IVCH is bringing advanced, lifesaving breast care to Incline Village—helping our community detect cancer early and stay healthy.



ADULT TENNIS & PICKLEBALL PROGRAMS

Tennis Beginner Clinic

Have you always wanted to play tennis but don't know where to begin? We can help you with the basics to get you started. Appropriate for the first timers and those just learning the game.

Ages: 16+

Day/Dates: Mondays, Wednesdays, Fridays,
June - September

Times: 11am - 12pm

Tennis Advanced Beginner Clinic

Continue working on the fundamentals of the game with our USTA - certified tennis pros. Designed for those still working on improving their tennis game or getting back into the sport after an absence.

Ages: 18+

Day/Dates: Mondays, Wednesdays, Fridays,
June - September

Times: 10 - 11am



Tennis Adult Daily Clinic

Practice different aspects of your game every day of the week with our USTA - certified tennis pros.

Ages: 16+

Day/Dates: Daily, May - October

Times: 9 - 10am

Tennis Extreme Drill

High-paced drills for competitive players looking for work on different aspects of their game. Conditioning drills and points, volleys, serve and return practice and match play.

Ages: 18+

Day/Dates: Fridays, June - September

Times: 10am - 12pm

Tennis Ladies Doubles Clinic

This Program is designed to bring members and guests together in a competitive and social session of round robin doubles play.

Ages: 18+

Day/Dates: Monday, May - September

Times: 4 - 5:30pm



**MENATH
INSURANCE**
AN ALERA GROUP COMPANY
Serving Lake Tahoe Since 1981



Relax.
We've got you covered.

Call Menath Insurance.

800-756-6507 | 775-831-3132

LOCAL EXPERTS | NATIONAL REACH
Personal, Business & Health

menath.com



Tennis & Pickleball Center



ADULT TENNIS & PICKLEBALL EVENTS

Annual Incline Open Tennis Tournament

The Incline Open is a fun-filled tennis competition for players of all skill levels. Men's and Women's Singles divisions; plus Men's, Women's and Mixed Doubles divisions for players levels 3.0 - 5.0. Winners' names are added to the huge Incline Open trophy, which is on display at the Incline Village Tennis & Pickleball Center throughout the year.

Day/Dates: July 24 - 26

Location: Tennis & Pickleball Center

Annual Incline Pickleball Open Tournament

Day/Dates: August 15 - 16

Location: Tennis & Pickleball Center

Pickleball Beginner Clinic

Get started playing pickleball today! We can help you with the basics. New players must attend a clinic before joining open play.

Day/Dates: Monday & Saturday, June - September

Times: 1:15 - 2:15pm

Pickleball Advanced Beginner Clinic

Know the basics but still worried about jumping into open play? Struggling with your serve? Don't know quite how to make your shots? This clinic is for you. We will work on skills such as serving, basic strokes, or knowing where to stand on the court. Other concepts may be introduced to help you understand how to improve your pickleball game.

Day/Dates: Monday & Saturday, June - September

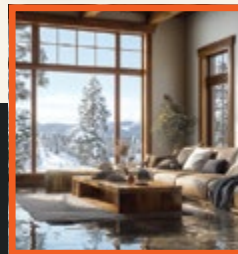
Times: 1:15 - 2:15pm

Pickleball Adult Daily Clinic

Practice different aspects of your game every day of the week with our PB Pros. If you're serious about improving your game, this is how you want to kick off your day, warm up and get ready for your open play. You will develop your technical and tactical game.

Day/Dates: Daily, June - August

Times: 8 - 9am



WATER DAMAGE? ACT FAST.

WE OFFER PROFESSIONAL DRYING SERVICES AND WORK DIRECTLY WITH YOUR INSURANCE.

- ➔ WATER MITIGATION AND DRYING
- ➔ MOLD REMEDIATION
- ➔ CRAWLSPACE ENCAPSULATION
- ➔ RADON MITIGATION



CALL US TODAY!
530-583-6653 (MOLD)

WWW.TAHOEMOLDANDWATER.COM

KINGS BEACH, CA

License Numbers: CA 960994, NV 0079127



**PROJECTED
OPENING DATES**

Driving Range
mid-April
(as soon as weather permits)

**Championship
Golf Course**
Friday, May 15

Mountain Golf Course
Friday, May 22

GOLF SHOP

Offseason Golf Shop Offerings

The golf shop will remain open Tuesday - Saturday, 10am - 4pm during the offseason for shopping, virtual golf, club fitting and indoor lessons.

Get Outfitted for Golf Season

I can't believe it is that time of year once again as we prepare for another golf season. New merchandise will start to be available at the beginning of May and we have lots of great items on the floor already! The golf shops at the Championship and Mountain Golf

Courses continue to be a shopping destination for all things golf. From fashion forward and time-tested golf apparel to golf on course shot tracking devices and everything in between. So, when you are checking in for a tee time or after your round make sure you give yourself some time to browse our inventory of great golf gear and Incline Village items.

As in years past, the Mountain Golf Course will continue to house the best deals on golf apparel in the area. We

will be offering apparel at a 50% off minimum and some clearance items up to 80% off. We will also have golf shoes at 40% off throughout the entire golf season (while supplies last). So, for you discerning shoppers, make sure you check out the Mountain Course Golf Shop for the best deals all season long.

We look forward to seeing you soon!!!

Gregory Merritt

Gregory Merritt
District Merchandiser

**Radio + Digital
Podcast**

Print

Outdoor

**TV/Streaming
/OTT**

SEO

SEM

Social

Mobile

Display

Results-Proven. Relationship-Powered. From Strategy to Placement— Without the Learning Curve.

Your advertising dollars should work harder. We make them sweat. Our Lean. Local. Laser-focused Team Buys Media Better with Performance-driven campaigns.

Let's talk strategy! Connect for a consultation ☎ 775.327.4200 🌐 www.cc.media

Hate your bedding? Yeah, same.

The bedding industry settled. We didn't.

SIERRADREAMS

Other luxury bedding brands



Align™
Snap
System



All
Natural
Textiles



Partial



Oversized
Duvet
Covers &
Inserts



Zipper
Enclosures



Inconsistent



Transparent
Returns



Restrictive

Experience bedding done right with an exclusive offer of **20% off**. Visit sierradreams.com/tahoe or scan here:



100-NIGHT GUARANTEE | ★★★★★ 4.9/5



GOLF COURSE CONDITIONS

Throughout the winter, the golf course maintenance staff monitors the golf courses for snow depths, potential ice formation, damage to the courses, etc. The winter season can bring different scenarios, whether it is more of a mild winter with minimal snow or a heavy

one with deep snow depths covering the golf courses. This year we've had a bit of both at times. The good news is that as of late February there has been minimal ice formation on the greens, which can end up causing the most winter damage. In late February/early March we clear

cart paths to be able to get around the golf course, and then we start the process of snow removal on the golf course greens. It is too early to know what other kind of damage there may be or to what extent as of press time, but we're expecting manageable conditions. As we get closer to spring, we will start removing snow from greens and tees, and cleaning up all the debris that litters the courses throughout the winter. Spreading of black mulch and sand will help melt the snow, and before we know it we will be mowing and grooming the turf in preparation for the golf season. We look forward to seeing everyone out on the courses!

Jeff Clouthier

Jeff Clouthier, CGCS
Grounds Superintendent

Visit for a
courtesy
Pit Stop
Service

A Higher Level of Service

European Specialists

Audi - BMW - Mercedes - Mini - Porsche
Volkswagen - Tesla - Sprinter vans

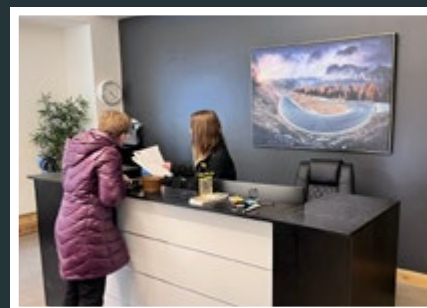


"First-rate, knowledgeable, and professional"

**GERMAN
IMPORT GARAGE**



11183 Trails End Rd, Truckee, CA 96161
www.GermanImportGarage.com
530-414-7733





GOLF LESSONS & CLINICS

The Incline Village Golf Academy, headquartered at the Incline Village Championship Course, is a cooperative approach to golf instruction that offers a wide range of private and semi-private lesson options, golf clinics, junior golf programs, and custom club fitting services. Visit the Golf Academy page this spring for more information about 2026 programs and clinics.



PGA JUNIOR LEAGUE

Both 13U and a 17U teams are happening this summer. Registration begins April 15.



NINE & WINE

Players enjoy a nine-hole scramble at the Mountain Course followed by wine and appetizer pairings on select Thursday evenings during the summer months. Space is limited and these events sell out, so reserve your spot in advance. Tickets typically go on sale when the course opens and are available online.



THE GRILLE AT THE CHATEAU

Opening in mid-May with the Championship Golf Course, The Grille at The Chateau will once again offer tasty options to locals and golfers alike.

Diners have the option of eating outdoors on the patio overlooking the 18th green on the Championship Course, inside the cozy dining room, as well as taking orders to-go for on the course or any of the other beautiful lunch spots Incline Village offers.

Visit TheGrilleAtTheChateau.com for updated menus this spring.

GRILLE HOURS

Monday - Thursday
11am - 6pm

Friday - Sunday
11am - 7:30pm



2026-27 SEASON PASSES ON SALE

Diamond Peak season passes for the 2026-27 season are currently on sale at the best prices of the year. Season passes come with plenty of perks like no blackout dates, discounts on lift tickets for friends, bonus tickets to partner resorts, and more. And if you plan to ski multiple times (and don't want to wait in the ticket line), a season pass is the way to go. Early-bird pricing goes through April 30, 2026, so act fast to secure the best deal!

Early Bird Pricing + Spring Access

Purchase now for the guaranteed best prices and most perks of the season!

Adult (24 - 64): \$524

Senior (65 - 69): \$491

Super Senior (70-79): \$247

Youth (13 - 23): \$409

Child (7 - 12): \$247

6 & Under/80+: FREE

Season Pass Perks

Peak Pledge easy refund policy:

Season Pass holders are eligible for a refund on unused passes if requested by January 15, 2027. Which makes purchasing a pass during the Early Bird sale a no brainer because you can always request a refund! (Note: a \$25 processing fee will be applied for each season pass refunded. No refunds will be issued after January 15, and we can not roll over season pass purchases from one season to the next.)

Bonus lift tickets: Each season we partner with likeminded resorts to offer free ski days for Diamond Peak pass holders. For the 2025-26 season we offered 49 total bonus days at 17

partner resorts, and we expect to offer a similar number for the 2026-27 ski season.

Discounted Bring-A-Friend tickets:

Get your friends on the mountain for a discounted rate of \$40 off the adult single-day full-mountain window rate for lift tickets. Use over time or all at once. Pass holder and friend(s) must be present to redeem.

Appreciation events: We host fun Season Pass Holder Appreciation Events and giveaways to show some extra love to the people who support us year after year. Details will be posted on the Events Calendar as well as emailed.



Diamond Peak Events Recap

We sincerely hope you were able to join us this season for some of the great events or awesome moments on the mountain. Check out our Facebook page for more fun photos.



DIAMOND PEAK MEMORIES

Thank you to everyone who sent in photos, memories, and memorabilia to help us celebrate our 60th season.

Been coming to Diamond Peak since the mid sixties. Here are some photos to share for the 60th anniversary. ▼ — Bob Lahl



▲ *This was taken on Crystal Ridge, preseason. We're moving homemade snow piles around. I was probably in my mid 20s. I worked there for about 10 years as a groomer and in the summer worked on the mountain crew. One of my favorite memories would be hanging out at the Snowflake Lodge deck.*

— Matthew Rotter



Photo from Diamond Peak historical archive

▲ *I remember spending a very snowy week over Christmas of 1970 with my mother and younger brother in Incline Village. I had just turned 15. There were only 3 Chairlifts (red, yellow and blue). It was cold and snowy all week. We skied every day and loved having lunch by the real wood fire in the center of Snowflake Lodge. The chili dog and hot chocolate were the best! Skiing was great with a ton of fresh powder. We skied every day. I remember watching the playoff 49er-Cowboys football game in the*

Rathskeller Tavern downstairs of the lower lodge. A hot buttered rum (no alcohol) helped warm and console us during the disappointing 49ers loss.

I taught my little brother to ski that week even though I had only skied a couple of times the year before myself. For years after that I taught my girlfriend, my daughter and my grandchildren how to ski there on schoolhouse and lodgepole. I still love skiing at Diamond Peak and cherish the memories of all those years.

— Craig Saunders

I started working at Ski Incline in the winter of 1985/86 which was the 20th anniversary year. Now celebrating 60 yrs. Where did the time go! It's been an amazing journey that filled our lives with so many friends and memories, not to mention some awesome powder days. The pics that include our daughter Jessica were her first day on the mountain when she was 3 years old. The one with me in the handles of the cascade sled, I'm giving my mom from Michigan a ride down Crystal ridge, it was her first time ever on a ski run and I will never forget how exited/scared she was, she was giggling like a little girl the entire trip down. ▼

— John Dollar





CLEARCREEK HOMESITE 34

GALLAGHER



CONSTRUCTION

California . Hawaii . Nevada

OUR TEAM COMBINES FINE INTERIOR DESIGN,
SEAMLESS MANAGEMENT AND EXCEPTIONAL CRAFTSMANSHIP
GALLAGHERCONSTRUCTIONTAHOE.COM



MAJOR CAPITOL IMPROVEMENT PROJECTS

Tahoe Basin construction season is approaching, and the Public Works team has been actively preparing over the winter months for this summer's work.

Below is a summary of the major capital improvement projects scheduled for construction this season:

Incline Beach House Replacement

Construction will commence in April 2026 with an expected opening of July 2027. See pages 6-10 for more details.

Incline Bike Park

will be closed as the new park expansions are under construction. expected opening July 2026. See pages 27-31 for details..

Skate Park

Enhancements set to roll out this summer! See info on page 31.

Recreation Center HVAC Replacement

Will be under construction, with limited operational and access impacts, from April 2026 until September 2026. See page 33.

The Championship Course Cart Path Replacement

Project is in pre-construction and design development. Further updates will be posted on the website as they are available.

Tennis & Pickleball Center Court Reconstruction

Project is currently in preliminary design development. Further updates will be posted on the website as they are available.

Burnt Cedar Emergency Fuel Tank Construction

Project information is available on the website.

WASTE NOT PROGRAM

Household Hazardous Waste/Electronic Waste Program Updates

The household hazardous waste program will resume operations in 2026, the week of Memorial Day and run through Labor Day. Waste drop-off will be available each Tuesday during the summer by appointment only. Appointments may be booked up to 2 weeks in advance. Additional information is available at our website ivgidhww.com or by contacting staff at WasteNot@ivgid.org or by calling 775.832.1284.

Yard Waste/Pine Needle Recycling

Please check the IVGID website for updates or watch for newsletters in your quarterly WM bill.



For a full list of Capital Improvement Projects Scan this QR Code

Recycling Program

Exciting news! Waste Management is now accepting additional items in single-stream recycling. Newly accepted are paper and plastic to-go cups! Please ensure that recyclables are clean of all food/drink residue to help reduce the risk of wildlife accessing the recycling cart and causing a spill. For a complete list of items that can go in your single-stream (blue lid) cart, please visit: <https://www.wm.com/us/en/recycle-right>

Litter Issues?

IVGID continues to partner with Clean Tahoe for litter cleanup; report spills via the Clean Tahoe hotline: 530.544.4210, or northshore@clean-tahoe.org

Earth Day Events

The Tahoe Water Suppliers Association is providing outreach at the following Earth Day events. Visit the Drink Tahoe Tap booth to participate in the blind water taste test of bottled vs. Tahoe Tap.

South Lake Tahoe Earth Day Festival: Saturday, April 18, from 10am – 3pm at Lake Tahoe Community College, South Lake Tahoe. Details: <https://southtahoeearthday.org/>

Tahoe Truckee Earth Day: Saturday, April 25, from 11am – 5pm. at The Village at Palisades Tahoe. Details: <https://www.palisadestahoe.com/events-and-activities/events-calendar/tahoe-truckee-earth-day-festival>

Volunteers needed for Tahoe-Truckee Snapshot Day

Interested in the water quality of our Incline Village and North Shore watersheds? Join us for the 26th annual Tahoe-Truckee Snapshot Day, a one-day event where volunteers become citizen scientists and capture spring runoff conditions in Lake Tahoe. May 9 from 9am - 12pm, Tahoe Waterman's Landing, Carnelian Bay. More information is available at tahoetruckeesnapshotday.org.

Incline Village/Crystal Bay Litter Cleanup

The Incline Green Clean returns this June! Clean up a park, beach, bike path, creek, or wherever your favorite place is in the IV/CB community. IVGID staff will be at the library to provide cleanup supplies and receive all collected litter. Following the cleanup, the library is hosting its annual summer kickoff block party. June 13 from 9am - 12pm, Incline Village Library.

Curators of the unique

Sierra | Sotheby's
INTERNATIONAL REALTY

Experience service that is truly 1 of 1. Connect with
one of our global real estate advisors today.



HAYDEN HAFHEY
775.558.9540

CA DRE 02230210 | NV S.0190150



DAVID GEMME
530.277.8881

CA DRE 01371048 | NV S.0179228



DENISE BREMER
775.342.4660

NV S.0173035 | CA DRE 02120073



KHAL PLUCKHAN
775.298.1196

NV S.0182170



MICHELLE SEELEY
530.306.5450

CA DRE 02146860 | NV S.0200087



YVETTE SHIPMAN
775.298.1599

CA DRE 01099340 | NV S.0066464



DIANE BROWN
775.691.2114

CA DRE 01807676 | NV S.0059465



RACHEL TURNER
310.854.9394

CA DRE 01725286



**GRETCHEN LANCASTER
SPROEHNLE**
775.276.5095

NV S.0185892 | CA DRE 02041718

sierrasothebysrealty.com

RENO | INCLINE VILLAGE | ZEPHYR COVE | SOUTH LAKE TAHOE | TAHOE CITY | OLYMPIC VALLEY | TRUCKEE

Copyright© Sierra Sotheby's International Realty 2026. Based upon information that we consider reliable, but because it has been supplied by third parties, we cannot represent that it is accurate or complete; square footage is an estimate only. ©MMXXVI Sotheby's International Realty Affiliates, Inc. All Rights Reserved. Sotheby's International Realty® is a licensed trademark to Sotheby's International Realty Affiliates, Inc. An Equal Opportunity Company.



©Sarah Woods Photography



©Sarah Woods Photography

CELEBRATIONS AT THE CHATEAU & ASPEN GROVE

Spring is off to a strong start for our Weddings & Events department, with demand for both celebrations and corporate gatherings across our venues. At The Chateau, we are seeing another vibrant wedding season ahead, with peak summer and fall Saturdays booking well in advance. Couples continue to be drawn to the Grand Ballroom’s vaulted timber ceilings, dramatic fireplaces, and expansive deck

overlooking the mountains, lake, and golf course. A setting that effortlessly blends Tahoe elegance with warmth and hospitality.

Aspen Grove remains a favorite for couples and groups seeking a more relaxed, outdoor experience. Nestled among the aspens along Third Creek, the venue offers a naturally beautiful backdrop that feels intimate and distinctly Tahoe. From spring ceremonies beneath the trees to lively summer receptions under café lights, Aspen Grove continues to provide a memorable setting for connection and celebration.

We’re also continuing to offer our Beach Wedding program, available exclusively to IVGID Picture Pass holders. This option provides a beautiful Lake Tahoe backdrop for ceremonies in a simple, meaningful way, and it’s been a special addition to our portfolio of offerings.

Beyond weddings, we are actively expanding our corporate retreat and social event offerings. With integrated opportunities that include golf outings, mountain recreation and curated food and beverage experiences, our team is focused on creating events that feel thoughtful, seamless, and enjoyable, whether guests are celebrating something special or gathering to get work done. As always, we remain committed to delivering exceptional service that reflects the pride we have in our community.

We look forward to another successful season welcoming guests to Incline Village and showcasing the very best of what our venues have to offer.



SUMMER ADVENTURES WITH
**DIAMOND PEAK
 SKI TEAM**
*Summer
 Camps*
 MTN BIKE • HIKE • SWIM

BOOST SKILLS IN OUR MOUNTAIN BIKING CAMP, TRAIN ALL SUMMER WITH THE MOUNTAIN BIKING TEAM, OR EXPLORE A LITTLE OF EVERYTHING IN OUR ADVENTURE CAMPS!

FOR REGISTRATION AND MORE INFO

DPSEF.ORG/PROGRAMS

Contact the events team at 775.832.1240 or submit an inquiry at InclineWeddings.com for more info.

Fast Cars.

Rock Stars.

And Cowboy
Paintings.

Books that take you
by surprise.

The kind you'll find
at the Bretzlaff
Book Shop inside
the newly expanded
Nevada Museum
of Art.

Your coffee table
will never be
the same.

B
Bretzlaff
Book
Shop

N Nevada
Museum
of Art

160 West Liberty Street
Reno, NV 89509
775.329.3333 | nevadaart.org



INCLINE VILLAGE BOARD OF TRUSTEES

The Incline Village General Improvement District is governed by an elected five-member Board of Trustees. Trustees are elected for four-year terms.

Board of Trustees meetings are generally held twice a month, on a schedule set by the Board, with all meetings held within the District. Agendas, meeting materials and minutes are posted to the District's CivicPlus portal on the website.

Visit the IVGID Board of Trustees page on the website to contact any/all of the Trustees with questions or concerns.



Scan this QR code for the CivicPlus portal.



Michaela Tonking
Chair

Michaela Tonking had the privilege of growing up in Incline Village, having left to attend the University of Colorado, Boulder where she earned a B.S. and M.S. in Business Administration with emphasis in Accounting. She continued her education at Brown University where she earned

a M.A. in Urban Education Policy. Michaela works with state policy makers across the country on education funding and resource allocation. Michaela loves the community she grew up in and is excited to be back. She enjoys all IVGID has to offer from skiing at Diamond Peak,

golfing at the Mountain and Championship golf courses, to taking classes at the Recreation Center. She currently coaches the We The People team at Incline High School and serves as a board member for the Incline Education Foundation.

Michaela was elected in November 2024 to serve through 2028.

546 Lantern Ct., Incline Village, Nevada 89451 | tonking_trustee@ivgid.org | 775.225.0748 | Term expires 2028



Michelle Jezycki
Vice Chair

Michelle had the privilege of growing up in Incline Village and graduating from Incline High School. She attended the University of Nevada at Reno and graduated with a dual major in Political Science and Secondary Education. While employed by Washoe County School District, Michelle ran a program for abused and exploited children in the county and was later invited to lead and replicate the program nationwide through the Office of Juvenile Justice and Delinquency Prevention.

After earning her Masters degree in Organizational Management/Human Resources, Michelle served as a management consultant and ultimately served at the United States Senate as Director of Human Resources and Senior Training and Education Administrator. Michelle is the owner of Trifecta Consulting, providing management, leadership, and HR consultative services to both public and private clients worldwide. She is also an adjunct professor of

leadership for the American University in Bulgaria in their EMBA program. Michelle is also an active and licensed realtor with eXp Realty. Michelle moved back to Incline Village in 2014 and is dedicated to serving and giving back to the community that has offered her so much. She enjoys all of the amazing amenities our community has to offer, from skiing, boating, golfing, the recreation center, and more.

Michelle was elected in November 2024 to serve through 2028.

930 Tahoe Blvd. # 802-567, Incline Village, Nevada 89451 | 202.468.0265 | jezycki_trustee@ivgid.org | Term expires 2028



Dave Noble, Secretary

Dave grew up in Southern California. He earned his B.A. (International Relations/Environmental Studies) from the University of Pennsylvania and his J.D. from Loyola Law School (Los Angeles). Dave has been a full-time resident of Incline Village since 1997. In 2022, he retired from the Nevada

Public Utilities Commission after 25 years of service with the State. The majority of his career was spent regulating water/sewer, electric, gas, and telecommunications utilities in Nevada. Dave and his wife have two daughters who currently attend NYU and Cal (U.C. Berkeley).

Dave was elected in November 2022 to serve through 2026.

893 Southwood Blvd., Incline Village, Nevada 89451 | 775.813.1991 | noble_trustee@ivgid.org | Term expires 2026



Mick Homan, Treasurer

Mick grew up in a small town in Iowa and graduated from the University of Northern Iowa with a bachelor's degree in accounting. He is a CPA and CMA. Mick spent the first 12 years of his career working in the audit and assurance practices of two of the world's largest public accounting firms, serving clients in a variety of industries in both the private and public sectors.

He spent the last 25 years of his career at The Procter & Gamble Company in several corporate and business unit finance and accounting roles. He retired from P&G as Senior Vice President and Chief Accounting Officer. His career allowed Mick and his family to live in numerous regions in the U.S. and abroad. Their choice to move to Incline Village for retirement dates to when

he and his wife Melissa first started visiting the Tahoe region in the late 1980s. They moved to Incline Village full-time in 2020. They're both avid skiers, golfers and hikers and regularly enjoy many of IVGID's recreational venues. They have two children, both grown men. Mick previously served on IVGID's Audit Committee. Mick was elected in November 2024 to serve through 2028.

986 Chip Ct, Incline Village | 513.602.7240 | holman_trustee@ivgid.org | 513.602.7240 | Term expires 2028



Ray Tulloch, Trustee

Ray moved to the USA from Scotland in 1999 on a career assignment and was very proud to become a U.S. citizen in 2018. He has a Bachelor of Science in Electrical and Electronic Engineering and an MBA from Strathclyde University, Glasgow. His professional career includes extensive experience in the Utilities sector including Operations, Mergers and Acquisitions, Customer Service, and

Capital Investment Strategy with an international Utility Company. Since 2004 he has delivered consulting services and management audits, focusing on strategy and business improvement, both through his company, Munro Tulloch, and for several large consulting and accounting firms including IBM and Price Waterhouse Coopers where he was a Director. Ray and his wife have been full-time residents of Incline

Village since 2007. (For regular visitors to the Village Green dog park Ray is also better known as "Timber's Dad"!) He has previously been a member and Chair of the IVGID Audit Committee. Ray is an active Masters ski racer and past President of Far West Masters Ski Racing. He is also the Head Coach for the Mt. Rose Ski Team race program. Ray was elected in November 2022 to serve through 2026.

893 Southwood Blvd., Incline Village, Nevada 89451 | 207.409.4872 | tulloch_trustee@ivgid.org | Term expires 2026



DISCOVER YOUR TRUE TAHOE JOB THIS SUMMER

Parks & Recreation - Beach Host, Swim Instructor, Lifeguard, Tennis/Pickleball Host & Coach

Food & Beverage - Beach/Golf Cook, Server & Snack Bar, Dishwasher, Grille Host

Golf - Ambassador, Golf Shop, Outside Services, Grounds, Driving Range, Instructor

View the full list of available positions online at yourtahoepace.com/jobs. Call 775.832.1100 or email jobs@yourtahoepace.com for more information.



ORLANDO
ENTERPRISES TAHOE, INC.
(775) 831-5567
(530) 546-5567
Building Quality Homes Since 1978
-Design Build-
-Competitive Pricing-
NV Lic # 0019856 - CA Lic # 876583
www.orlandoenterprises.com



NEW & PROMOTED STAFF

We are pleased to welcome these new staff members, congratulate those who have been promoted into new roles and welcome back those returning to the District.

New Staff

Paula Aiazzi - Accountant

Stephanie Goblet - Management Analyst - Payroll

Luis Hernandez - Accountant

Matthew Hernandez - Lift Maintenance Technician

Daniel Jones - Ski Patrol Director/Safety Coordinator

Returning

Sylvain Malroux - Tennis & Pickleball Center Supervisor

Promotions

Christian Coyne - Facilities Operations Lead

Noemi Barter - Director of Finance

Rachel Hardie - Accounts Payable Technician

PLAY HAWAII'S *finest* GOLF COURSES

ESCAPE THE COLD SIERRA WEATHER & BOOK YOUR TEE TIME TODAY!

MAUNA LANI NORTH | MAUNA LANI SOUTH



For more information and to book tee times, visit MaunaLaniGolf.com



BOCCE BALL PARK

980 Incline Way
Incline Village, NV 89451
inclinerecreation.com

Bocce is one of the most widely played games in the world and has been gaining popularity in Incline Village. The park is located in the creek-side forest area adjacent to the Incline Village Recreation Center parking lot.

Bocce Ball & Group Rentals: Don't have a bocce set? Bocce sets are available for rent from the Recreation Center, during operating hours, for \$20. The Bocce Ball Park is also available for group rentals for Incline Village and Crystal Bay residents and the general public. View details on the Rental Facilities page.



FITNESS TRAIL

The Incline Village Fitness Trail (previously known as the Exercourse) is an 18-station exercise course adjacent to the Village Green. The .8 mile course winds through the forest next to Incline Creek. The course contains accessible walking, running, snowshoeing, biking and exercise trails, and is used by many residents and visitors year-round. The Fitness Trail was updated in partnership with the Incline Tahoe Foundation and community funds.



DISC GOLF COURSE

The Incline Village Disc Golf Course includes 18 par 3 holes in a picturesque setting located within Incline Park adjacent to the Tennis & Pickleball Center, Recreation Center, Skateboard Park and Ridgeline Park. This free multi-use area is to be enjoyed by all ages, created with donations in partnership with the Incline Village Parks & Recreation Department, the Incline Tahoe Foundation and the North Tahoe Lions Club. Parking is available at the Recreation Center at 980 Incline Way. Discs are available for purchase or rent at the Recreation Center.

THE HOLMAN FAMILY BIKE PARK

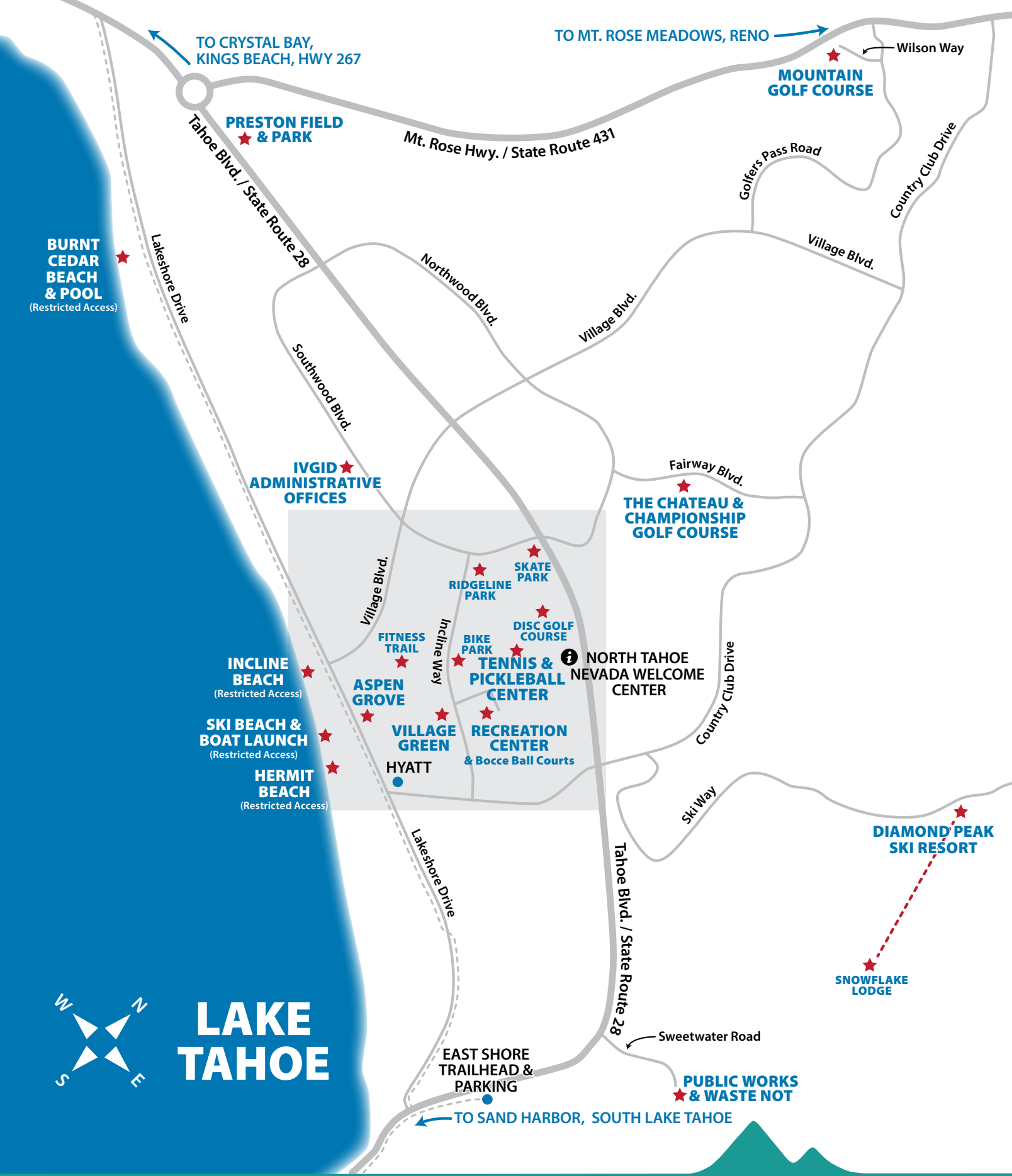
980 Incline Way, Incline Village, NV 89451 | inclinerecreation.com

The Incline Village Parks & Recreation, the Incline Tahoe Foundation, and Incline Bike Project collaborated to develop and maintain the Robert & Robin Holman Family Community Bike Park. This park offers a pump track and was funded through generous donations by community members and in large part by a grant from the Holman Family Philanthropies Fund held at Parasol Tahoe Community Foundation. The Incline Bike Park Project's mission is to provide a free-to-use bike park facility that welcomes all ages and skill levels to a safe, outdoor, healthy, family friendly community-gathering venue.



SKATE PARK

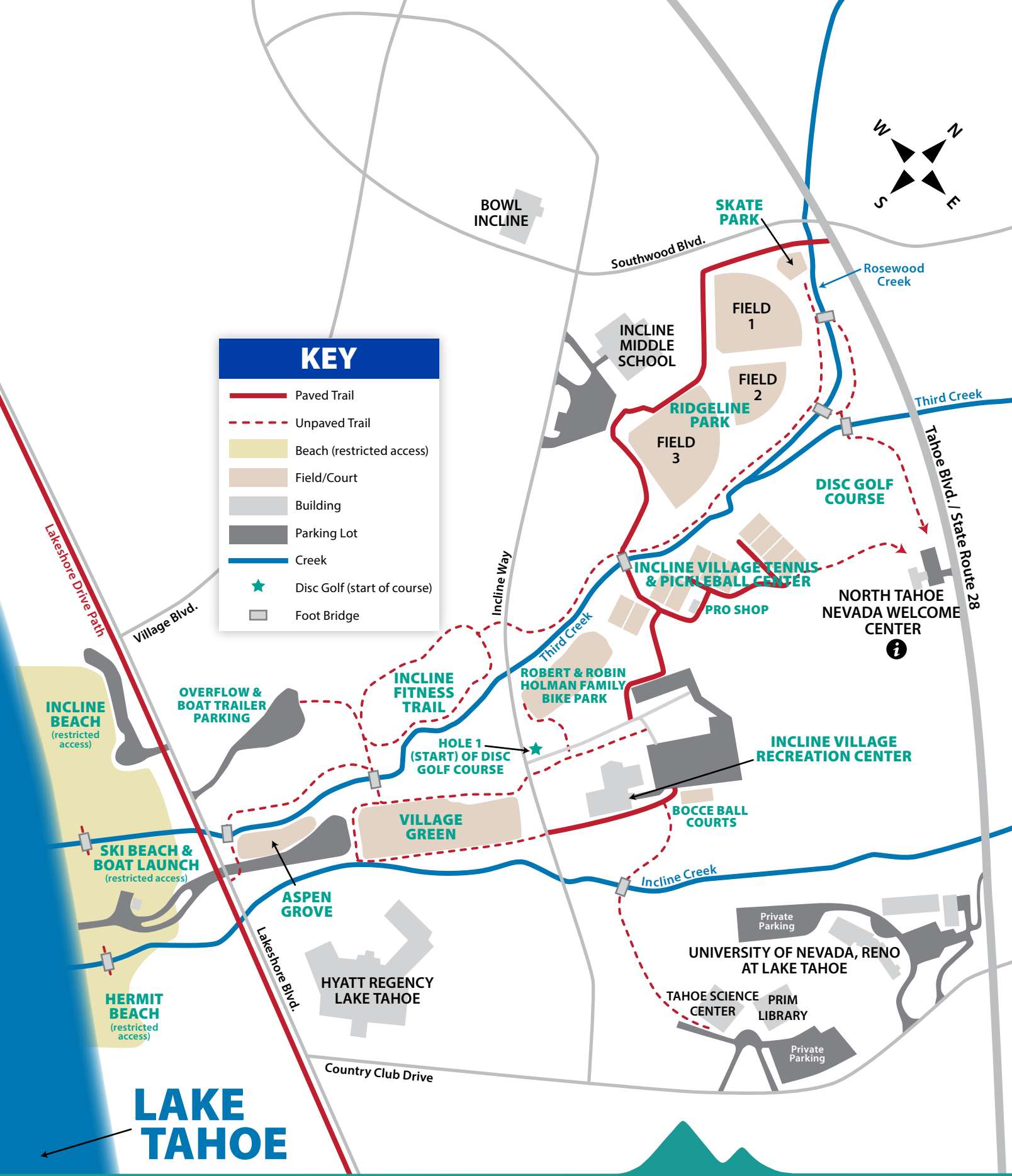
Hwy 28 & Southwood Blvd., Incline Village, NV 89451 | inclinerecreation.com
Incline Skate Park, centrally located on the corner of Tahoe Blvd (Hwy 28) and Southwood Blvd. in Ridgeline Park, has something to offer everyone. There is an intermediate/advanced section of the park consisting of two 5-foot side-by-side bowls connected with a spine. In the middle of the park is a 3-foot tall fun box, and the entire right side of the small end is a 2.5-foot tall bowl for beginners. The street course is laid out on top, flowing in a circle with an 8-foot long flat rail, 6-foot long down rail, a set of 4 stairs, and a 10-foot long downward ramp leading into the bowls.



LAKE TAHOE

Access to IVGID Beaches (Ski Beach, Incline Beach, Hermit Beach and Burnt Cedar) is restricted to IVGID Recreation Pass holders, their guests, and Recreation Punch Card holders with beach access.

LEARN MORE ABOUT IVGID PASSES AT INLINERECREATION.COM



KEY	
	Paved Trail
	Unpaved Trail
	Beach (restricted access)
	Field/Court
	Building
	Parking Lot
	Creek
	Disc Golf (start of course)
	Foot Bridge

LAKE TAHOE

Access to IVGID Beaches (Ski Beach, Incline Beach, Hermit Beach and Burnt Cedar) is restricted to IVGID Recreation Pass holders, their guests, and Recreation Punch Card holders with beach access.

LEARN MORE ABOUT IVGID PASSES AT INCLINERECREATION.COM

your *Tahoe*
real estate experts



**KERRY
DONOVAN**
—
775.750.2190
Donovan Group
Luxury Team
NV BS.52696



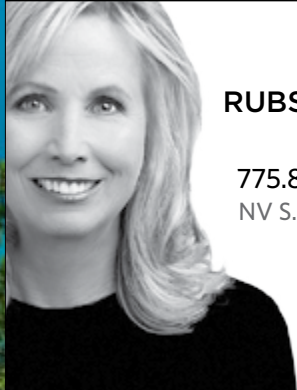
**MEGAN
PARR WARREN**
—
775.303.2672
Donovan Group
Luxury Team
NV BS.143530



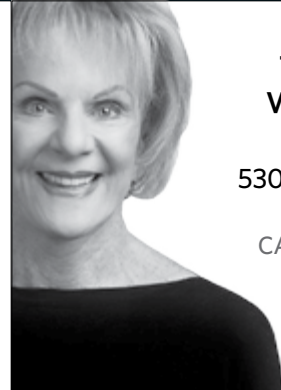
**KEVIN
DONOVAN**
—
775.750.7339
Donovan Group
Luxury Team
NV S.0194609



**JACKIE
TAORMINA**
—
775.298.6571
Tahoe Local
Realtor
NV S.0198635



**JANE
RUBSAMÉN**
—
775.843.0312
NV S.0066076



**TRINKIE
WATSON**
—
530.582.0722
NV BS.1022
CA 00326518



**KRISTINA
MATTSON**
—
530.613.5207
NV BS.0146479
CA 01950662



**SUZIE
MCShERRY**
—
775.413.3106
NV S.0190396

CHASE
INTERNATIONAL
—
LUXURY LEADER



**INCLINE
VILLAGE**

GENERAL IMPROVEMENT DISTRICT

893 Southwood Blvd.
Incline Village, NV 89451

PRSRT STD
US POSTAGE
PAID
DENVER, CO
PERMIT #5377

Technology you can trust...

without the drive.



**You don't have to travel
far for world-class care.**

We offer the same advanced technology
used at major medical centers like UC Davis,
UCSF, and Stanford.

*Rooted in community,
powered by innovation.*

inclinehospital.com



INCLINE VILLAGE
COMMUNITY HOSPITAL